

Editors
Ade Gafar Abdullah
Asep Bayu Dani Mardiyanto
Ismo Wilafy

EXPLORING IDEAS FOR YOUNG RESEARCHERS

in Advanced Science and Technology

Proceedings of the 2nd Annual Applied Science and Engineering Conference
24 August 2017, Bandung, West Java, Indonesia



2017
IADIS

IADIS Conference Series
Trends in Science and Technology

2nd Annual Applied Science and Engineering Conference (AASEC 2017)

IOP Conference Series: Materials Science and Engineering
Volume 288

Bandung, Indonesia
24 August 2017

Part 1 of 2

Editors:

**Ade Gafar Abdullah
Asep Bayu Dani Nandiyanto
Isma Widiaty**

ISBN: 978-1-5108-5687-5
ISSN: 1757-8981

Printed from e-media with permission by:

Curran Associates, Inc.
57 Morehouse Lane
Red Hook, NY 12571

CURRAN ASSOCIATES INC.
proceedings
.com

Some format issues inherent in the e-media version may also appear in this print version.

Copyright© (2017) by the Institute of Physics
All rights reserved. The material featured in this book is subject to
IOP copyright protection, unless otherwise indicated.

Printed by Curran Associates, Inc. (2018)

For permission requests, please contact the Institute of Physics
at the address below.

Institute of Physics
Dirac House, Temple Back
Bristol BS1 6BE UK

Phone: 44 1 17 929 7481
Fax: 44 1 17 920 0979

tcctracking@iop.org

Additional copies of this publication are available from:

Curran Associates, Inc.
57 Morehouse Lane
Red Hook, NY 12571 USA
Phone: 845-758-0400
Fax: 845-758-2633
Email: curran@proceedings.com
Web: www.proceedings.com

Preface

The 2nd Annual Applied Science and Engineering Conference (AASEC 2017) was held in Bandung, Indonesia, on 24 August 2017. AASEC 2017 is hosted by the UPI Publication Center, Universitas Pendidikan Indonesia (UPI). This conference is jointly organized with Universitas Sumatera Utara (USU), Universitas Negeri Manado (UNIMA), Universitas Negeri Surabaya (UNESA), and Universitas Muhammadiyah Purwokerto (UMP).

The conference was used as a scientific forum for accommodating discussions among young researchers that originated from Indonesia in the field of applied science and engineering. Therefore, the invited speakers in this conference were young researchers that are well-known and reputable in the world.

The participants of AASEC 2017 were from almost every part of the world with various background, including academia, industry, and even well-known enterprise. In general, more than 320 papers were participated from various topics, including mathematics, physics, computer science, material science, chemistry, biology, pharmacology, sport science and technology, management science, mechanical engineering, chemical engineering, civil engineering, electrical engineering, electronics engineering, material engineering, environmental engineering, industry engineering, information engineering, computer and communication engineering, and architecture.

We would like to thank all of those who helped and supported AASEC 2017. Each individual and institution's support was very important for the success of this conference. Specifically, we would like to acknowledge the advisory board, scientific committee, and organizing committee for their valuable advice, help, suggestion, and support in the organization and helpful peer-reviewing process of the papers. We would also extend our best gratitude to keynote speakers for their valuable contribution for sharing ideas and knowledge in the AASEC 2017.

We sincerely hope that AASEC 2017 will be a forum for excellent discussions for improving the quality of research and development relating to the applied science and engineering. We also hope that this forum will put forward new ideas and promote collaborative researches among participants. We believe that the proceedings can serve as an important research source of reference and the knowledge. Indeed, the proceedings will lead to not only scientific and engineering progress but also other new products and processes for better science and technology.

The Editors

Dr. Ade Gafar Abdullah

Dr. Eng. Asep Bayu Dani Nandiyanto

Dr. Isma Widiaty



LIST OF COMMITTEE

Conference Chair:

Dr. Eng. Asep Bayu Dani Nandiyanto

Co- Conference Chair:

Dr. Ade Gafar Abdullah

International Advisory Boards:

Dr. Eng. Sidik Permana, Institut Teknologi Bandung, Indonesia

Dr. Eng. Tedi Kurniawan, University Malaysia Pahang, Malaysia

Dr. M. Roil Bilad – Nanyang Technological University, Indonesia

Dr. Oki Muraza – King Fahd University of Petroleum and Minerals, Saudi Arabia

Dr. Farid Fadhillah – Al Imam Mohammad bin Saud Islamic University, Saudi Arabia

Dr. Zulfan Adi Putra, Petronas University, Malaysia

Syeilendra Pramuditya, Ph.D, Institut Teknologi Bandung, Indonesia

Dr. Astri Rinanti – Universitas Trisakti, Indonesia

Dr. rer. nat. I Gusti Ngurah Agung Suryaputra – Universitas Pendidikan Ganesha, Indonesia

Dr. Lilik Anifah – Universitas Negeri Surabaya, Indonesia

Andri P Pramono, Ph.D – Univ Pembangunan Veteran Jakarta, Indonesia

Dr. Eng. Suranto AM – Universitas Pembangunan Nasional “Veteran”, Yogyakarta, Indonesia

Krismadinata, Ph.D. – Universitas Negeri Padang, Indonesia

Dr. Juniastel Rajagukguk – Universitas Negeri Medan, Indonesia

Dr. Hadi Kuncoro, Universitas Mulawarman, Indonesia

Rino A Nugroho, Ph.D, Universitas Sebelas Maret, Indonesia

Prof. Dr. Muhammad Ali Ramdhani, UIN Sunan Gunung Djati Bandung, Indonesia

Dr. Remon Lapisa, Universitas Negeri Padang, Indonesia

Scientific Committee

Prof. Dr. Asep Kadarohman, Universitas Pendidikan Indonesia, Indonesia

Prof. Dr. Didi Sukyadi, Universitas Pendidikan Indonesia, Indonesia

Prof. Dr. Anna Permanasari, Universitas Pendidikan Indonesia, Indonesia

Prof. Dr. Sumarto, Universitas Pendidikan Indonesia, Indonesia

Prof. Dr. M. Syaom Barliana, Universitas Pendidikan Indonesia, Indonesia

Prof. Dr. Ratih Hurriyati, Universitas Pendidikan Indonesia, Indonesia

Dr. Eng. Himsar Ambarita, Universitas Sumatera Utara, Indonesia

Mahyudin KM Nasution, Ph.D, Universitas Sumatera Utara, Indonesia

Prof. Dr. Madlazim, Universitas Negeri Surabaya, Indonesia

Dr. Sc. Agr. Yuni Sri Rahayu, Universitas Negeri Surabaya, Indonesia

Arie Wardhono, Ph.D, Universitas Negeri Surabaya, Indonesia

Dr. Ing. Parabelem Rompas, Universitas Negeri Manado, Indonesia

Dr. Verry Palilingan, Universitas Negeri Manado, Indonesia

Prof. Dr. Herry Sumual, Universitas Negeri Manado, Indonesia

Dr. Sriyanto, Universitas Muhammadiyah Purwokerto, Indonesia

Dr. Asmiyenti Djaliasrin Djalil, Universitas Muhammadiyah Purwokerto, Indonesia

Haryanto, Ph.D, Universitas Muhammadiyah Purwokerto, Indonesia

Organizing Committee

Dr. Isma Widiaty – Universitas Pendidikan Indonesia
Dr. Ana – Universitas Pendidikan Indonesia
Tutin Aryanti, Ph.D – Universitas Pendidikan Indonesia
Al Jupri, Ph. D – Universitas Pendidikan Indonesia
Dr. Dadang Lukman Hakim – Universitas Pendidikan Indonesia
Ari Arifin, M.A. – Universitas Pendidikan Indonesia
Cep Ubad Abdullah, M. Pd – Universitas Pendidikan Indonesia
Nia Amelia, S.Pd – Universitas Pendidikan Indonesia
Agus Juhana, S.Pd – Universitas Pendidikan Indonesia
Diky Zakaria, S.Pd – Universitas Pendidikan Indonesia
Wildan Arrasyid, S.Pd – Universitas Pendidikan Indonesia

Peer review statement

All papers published in this volume of *IOP Conference Series: Materials Science and Engineering* have been peer reviewed through processes administered by the proceedings Editors. Reviews were conducted by expert referees to the professional and scientific standards expected of a proceedings journal published by IOP Publishing.



This site uses cookies. By continuing to use this site you agree to our use of cookies. To find out more, see our [Privacy and Cookies policy](#).



Table of contents

Volume 288 ✓

2018

← Previous issue Next issue →

The 2nd Annual Applied Science and Engineering Conference (AASEC 2017) 24 August 2017, Bandung, Indonesia

Accepted papers received: 18 December 2017

Published online: 25 January 2018 ✓

[View all abstracts](#)

Preface

OPEN ACCESS

011001

The 2nd Annual Applied Science and Engineering Conference (AASEC 2017)

[+ View abstract](#)
 [View article](#)
 [PDF](#)

OPEN ACCESS

011002

Peer review statement

[+ View abstract](#)
 [View article](#)
 [PDF](#)

Papers

OPEN ACCESS

012001

Green Chemistry Principles: An Alternative Approach to Practice Laboratory Safety and Health

A S Wahyuningsih, M T Multazam, A B D Nandiyanto, A G Abdullah and I Widiaty

[+ View abstract](#)
 [View article](#)
 [PDF](#)

OPEN ACCESS

012002

N Sumarti

[+ View abstract](#)[View article](#)[PDF](#)**OPEN ACCESS**

012112

Physiological Demands of Playing Field Hockey Game at Sub Elite Players

N W Kusnanik, Y S Rahayu and B Rattray

[+ View abstract](#)[View article](#)[PDF](#)**OPEN ACCESS**

012113

Determination of Sodium, Potassium, Magnesium, and Calcium Minerals Level in Fresh and Boiled Broccoli and Cauliflower by Atomic Absorption Spectrometry

Nerdy

[+ View abstract](#)[View article](#)[PDF](#)**OPEN ACCESS**

012114

Green Awareness and Purchase Intention for Organic Products

O I B Hariyanto

[+ View abstract](#)[View article](#)[PDF](#)**OPEN ACCESS**

012115

Fatty Acid Analysis of Lipid Extracted from Rats by Gas Chromatography-Mass Spectrometry Method

P I Utami, W S Rahayu, I Nugraha and A N Rochana

[+ View abstract](#)[View article](#)[PDF](#)**OPEN ACCESS**

012116

The Emerging Wireless Body Area Network on Android Smartphones: A Review

P Puspitaningayu, A Widodo and E Yundra

[+ View abstract](#)[View article](#)[PDF](#)**OPEN ACCESS**

012117 ✓

Study on the Seawater Surface Elevation through Numerical Modeling Approach in Gulf of Manado ✓

P T D Rompas and J D I Manongko

[+ View abstract](#)[View article](#)[PDF](#)**OPEN ACCESS**

012118

Modified Polysulfone Ultrafiltration Membrane for Humic Acid Removal During Peat Water Treatment

P T P Aryanti, A M Noviyani, M F Kurnia, D A Rahayu and A Z Nisa

TABLE OF CONTENTS

PART I

GREEN CHEMISTRY PRINCIPLES: AN ALTERNATIVE APPROACH TO PRACTICE LABORATORY SAFETY AND HEALTH	1
<i>A S Wahyuningrih, M T Mulazzam, A B D Nandiyanto, A G Abdullah, I Widiaty</i>	
BIOACTIVITY OF ACETONE EXTRACT FROM SPIRULINA PLATENSIS	6
<i>A D Djafil, Y Nurmawati, U Pribadi, W S Rahayu, P I Uhami, Suwandri</i>	
THE EFFORT TO ENHANCE STUDENTS' MATHEMATICS LEARNING OUTCOME IN THE TOPIC OF FRACTION ADDITION BY USING DRAWING MEDIA	11
<i>D G Anep, K Soebariah</i>	
ANALYSIS OF BUS STATION SERVICES WITH IMPORTANCE-PERFORMANCE ANALYSIS: EMPIRICAL RESULTS OF GERBANGKERTOSUSILA REGION	15
<i>A D Witjaksono, Suyatno, Soepurno</i>	
IMPROVEMENT VALUE OF URBAN KAMPONG BASED ON COMMUNITY POTENTIAL IN AN ARCHITECTURAL PERSPECTIVE STUDY	21
<i>A F Prajawanisutra, D Hamid Z, I Yosita</i>	
ON THE DESIGN OF ARRAY MICROSTRIP ANTENNA WITH S-BAND FREQUENCY FOR RADAR COMMUNICATION	28
<i>A Faruqi, F Zaehani, R Kariadinata, M A Ramdhani</i>	
DESIGN OF MODERATOR NEUTRON FOR BORON NEUTRON CAPTURE THERAPY IN KARTINI NUCLEAR REACTOR USING MONTE CARLO N PARTICLE 5 SIMULATION	35
<i>D Wahyuningrih, A Jufriadi, H D Ayu, M I Muslih</i>	
CHEMOPREVENTIVE ACTIVITY OF KOLA (COLA ACCUMINATA) SEED ETHANOL EXTRACT IN MICE INDUCED BY CYCLOPHOSPHAMIDE	46
<i>I Nugraha, A N Annisa, A T Wibowo, A M Kusuma</i>	
FAULT DIAGNOSIS FOR DISTRIBUTION FEEDER BASE ON FUZZY LOGIC	51
<i>A Nugroho, Y Mulyadi, A G Abdullah, A B D Nandiyanto</i>	
DESIGN OF HYBRID POWER SYSTEM FOR REMOTE AREA	61
<i>A R Syarifah, A G Abdullah, D L Hakim, A B D Nandiyanto</i>	
EXPERT SYSTEM FOR DECIDING A SOLUTION OF MECHANICAL FAILURE IN A CAR USING CASE-BASED REASONING	70
<i>A Rahman, C Slamet, W Darmalaksana, Y A Gerhana, M A Ramdhani</i>	
SEVENTH GRADE STUDENTS' SCIENTIFIC CREATIVITY TEST: A PRELIMINARY-STUDY ON EARTH SCIENCE CONTEXT	76
<i>A Samudlin, A H Setyudin, E Suhendi, D T Chandra, P Sishaan</i>	
TENSILE STRENGTH IMPROVEMENT OF LLBC MATERIAL FOR LOW SPEED WIND TURBINE ROTOR BLADE BY VARYING COMPOSITE MATRIX	80
<i>A Setiawan, M M Al Gijari, R H Putra</i>	
EVODIA SUAVOLENSE'S REPELLENT ACTION AGAINST AEDES AEGYPTI FROM ENTERING A ROOM	84
<i>A Sulianti, M A Ramdhani</i>	
DHIKR TO MANAGE EPILEPTIFORM ACTIVITY IN A TEENAGER WITH DEPRESSIVE DISORDER	89
<i>A Sulianti, Y Yulianti, R Ritowanda, A D Amalia, R Anwar</i>	
BIOPSYCHOLOGICAL APPROACH ON HEARING IMPAIRMENT CAUSED BY INSTRUMENTAL HEARING HABIT	95
<i>A Sulianti, N Darajah, N G Rinalina, B N Wahid, M A Ramdhani</i>	
CYBERWELLNESS LEARNING RESOURCES (CLR) ACCESS CONTENT FILTER AS DANGEROUS AND LEARNING NETWORK ON THE INTERNET	101
<i>A Sumarno, S C Wibawa</i>	
DESIGN OF SMART SYSTEM TO DETECT RIPENESS OF TOMATO AND CHILI WITH NEW APPROACH IN DATA ACQUISITION	107
<i>A Taufik, N Ismail, Y A Gerhana, K Komarujaman, M A Ramdhani</i>	
COMPARISON STUDY OF CLASS F AND CLASS C FLY ASHES AS CEMENT REPLACEMENT MATERIAL ON STRENGTH DEVELOPMENT OF NON-CEMENT MORTAR	113
<i>A Wardhono</i>	

PHYSICAL FITNESS DEVELOPMENT REGARDING MAXIMUM PULSE RATE: A CASE OF INDONESIAN ADOLESCENTS	119
<i>A Wijaya, A Amrulloh</i>	
POTENTIAL IMPROVEMENT OF CIHIDEUNG VILLAGE THROUGH LAYOUT MODIFICATION OF LOCAL HOUSING AND SETTLEMENT	123
<i>A William, I Setiawan, L Yusta</i>	
CLASSIFICATION OF GAMELAN TONES BASED ON FRACTAL ANALYSIS	130
<i>A Wintarti, D Juniati, J N Wulandari</i>	
ECONOMIC EVALUATION OF THE PRODUCTION ETHANOL FROM CASSAVA ROOTS	135
<i>A B D Nandiyanto, A C Maulana, R Ragadhita, A G Abdullah</i>	
FEASIBILITY STUDY ON THE PRODUCTION OF BIOGAS IN DAIRY FARMING	141
<i>A B D Nandiyanto, R Ragadhita, A C Maulana, A G Abdullah</i>	
ECONOMIC PERSPECTIVE IN THE PRODUCTION OF PRESERVED SOYBEAN (TAUCO) WITH VARIOUS RAW MATERIAL QUANTITIES	147
<i>A B D Nandiyanto, R Ismiati, J Indrianti, A G Abdullah</i>	
ECONOMIC ANALYSIS OF THE CONVENTIONAL PRODUCTION OF TRADITIONAL BREM FOOD	153
<i>A B D Nandiyanto, J Indrianti, R Ismiati, A G Abdullah</i>	
HOT LAB-BASED PRACTICUM GUIDE FOR PRE-SERVICE PHYSICS TEACHERS	159
<i>A Malik, A Setiawan, A Subandi, A Permainasari, S Sulastman</i>	
DESIGN CONTROL SYSTEMS TO DETECT APPLIED GREASE MACHINE BASED ON PROGRAMMABLE LOGIC CONTROLLER IN MANUFACTURING INDUSTRY	166
<i>A Penco, A Palito F, S Ardi</i>	
WORK ROTATION TO REDUCE THE EFFECT OF NOISE EXPOSURE FOR OPERATORS IN SUGAR FACTORY	174
<i>Anizar, Erwin, R M Sari, K Syahputri, I Rizky</i>	
BUILDING CHARACTER THROUGH SCIENCE LEARNING WITH SCIENTIFIC LITERACY BASED	180
<i>B Rubini, A Permainasari, I Permana</i>	
STABILIZATION OF OUTPUT VOLTAGE WITH FEEDBACK CIRCUIT AND FILTER ON 2 STAGES-STEP UP CONVERTER (24V TO 312V DC)	185
<i>B Budiman, N Ismail, A Kuslyanto, B Susanto, M A Ramdhani</i>	
WIRELESS SENSOR NETWORK BASED ATMEGA16 MICROCONTROLLER AS TEMPERATURE AND CURRENT MONITORING SYSTEM ON DISTRIBUTION NETWORK TRANSFORMATOR	191
<i>B Supriyanto, S Nuzum</i>	
ADDITIONAL HALOGEN GROUP (F, CL, AND BR) TO 2-PHENYL- IMIDAZOLE[1,2A]PYRIDINE ON CORROSION INHIBITION PROPERTIES: A COMPUTATIONAL STUDY	199
<i>C D D Sudiarta, S Setiadi, M A Ramdhani, A L Istantyab, N I T Widhiastari</i>	
GROWTH AND YIELD OF CHILI IN NUTRIENT FILM TECHNIQUE AT DIFFERENT ELECTRICAL CONDUCTIVITY	204
<i>C Hilayat, M R Pahlevi, B F Taufiqurrahman, M A Ramdhani</i>	
THE ANALYSIS OF TOTAL SOLAR ECLIPSE PICTURES ON AUGUST 21, 2017 AT WYOMING, USA	208
<i>C P Azmoro, A R Achmad, A F C Wijaya, N D Ardi, S H Budianlistiorini</i>	
BASIC PHYSICS CONCEPTS OF NEW RENEWABLE ENERGIES	211
<i>C Rochman, D Nasrudin, Sulastman</i>	
AUTOMATED TEXT SUMMARIZATION FOR INDONESIAN ARTICLE USING VECTOR SPACE MODEL	217
<i>C Slamet, A R Amadja, D S Maylaswati, R S Lestari, W Darmalaksana, M A Ramdhani</i>	
WEB SCRAPING AND NAÏVE BAYES CLASSIFICATION FOR JOB SEARCH ENGINE	223
<i>C Slamet, R Andrian, D S Maylaswati, Suhendar, W Darmalaksana, M A Ramdhani</i>	
SOCIAL MEDIA-BASED IDENTIFIER FOR NATURAL DISASTER	230
<i>C Slamet, A Rahman, A Sutadi, W Darmalaksana, M A Ramdhani, D S Maylaswati</i>	
DOES IT MATTER?	237
<i>D A Nasswantara, D Nugrohaseno, S Iriani</i>	
DEA OPTIMIZATION WITH NEURAL NETWORK IN BENCHMARKING PROCESS	240
<i>D Abdullah, Tulax, S Savitri, S Effendi, Hartono</i>	

THE IMPLEMENTATION OF SPEECH RECOGNITION USING MEL-FREQUENCY CEPSTRUM COEFFICIENTS (MFCC) AND SUPPORT VECTOR MACHINE (SVM) METHOD BASED ON PYTHON TO CONTROL ROBOT ARM	248
<i>D Anggruani, W S M Sanjaya, M Y S Nurazylidick, M Munawaroh</i>	
A MODERN VIBE: THE RE-DESIGN OF TRADITIONAL MARKET	258
<i>D Fitria, T Megayanti, I Sarasetja</i>	
PHYSICS PHENOMENA ON HOUSING ARCHITECTURE IN KAMPUNG NAGA	263
<i>D Nurudin, C Rochman, A Mulyuddin</i>	
STORE IMAGE: MEDIATOR OF SOCIAL RESPONSIBILITY AND CUSTOMER PERCEIVED VALUE TO CUSTOMER TRUST FOR ORGANIC PRODUCTS	270
<i>D P Alamayyah, D Swarifuddin</i>	
EXPERIMENTAL STUDY OF INCORPORATING FINS ON THE ROTOR BLADES OF SAVONIUS WIND TURBINE	276
<i>D Prabhawati, D S Wijayanto, I Widhiastuti</i>	
SYSTEMATIC DESIGN OF EXPERT SYSTEM USING UNIFIED MODELLING LANGUAGE	281
<i>D S Mayilawati, W Darmalakusana, M A Ramdhani</i>	
MODEL OF CYTATION NETWORK ANALYSIS USING SEQUENCE OF WORDS AS STRUCTURED TEXT REPRESENTATION	288
<i>D S Mulyawati, A Rahman, M I N Saputra, W Darmalakusana, M A Ramdhani</i>	
IDENTIFICATION AND CALCULATION OF POLLUTANT LOAD IN CIWARINGIN WATERSHED, INDONESIA: DOMESTIC SECTOR	294
<i>D S Wijaya, I Juswani</i>	
COMPUTER VIRTUAL MEDIA-AIDED ACTIVE LEARNING STUDENT SHEETS (ALSS) TO IMPROVE STUDENTS' UNDERSTANDING ON PV, PT, VT, AND TS DIAGRAMS OF IDEAL GAS	306
<i>D Saepataman, S Karim, M G Nugraha, A Zulfikar</i>	
EXPANSION PARALLEL LIQUID REFRIGERANT ON A VAPOR COMPRESSION SYSTEMS WITH R-290	313
<i>D Supriawan, E T Berman, M Komaru, Mutaufiq</i>	
EMOJI: REPRESENTATIONS OF NONVERBAL SYMBOLS IN COMMUNICATION TECHNOLOGY	319
<i>D Tanulyomomana, Taurayya</i>	
IMPROVING STUDENTS' ARGUMENTATION BY PROVIDING ANALOGICAL MAPPING-BASED THROUGH LAB INQUIRY FOR SCIENCE CLASS	326
<i>D Diniya, D Rindiana</i>	
THE IMPLEMENTATION OF ALERT SYSTEM FOR LAN NETWORK MONITORING USING THE DUDE BASED EMAIL	331
<i>E A Z Hamidi, I S Dzulcin, A Faruqi, M A Ramdhani</i>	
THE EFFECTIVENESS OF OINTMENT OF PATAH TULANG STEM'S (EUPHORBIA TIRUCALLI) ETHANOL EXTRACT FOR BURN WOUND HEALING ON WHITE RATS (RATTUS NORVEGICUS)	339
<i>S Aisah, P I Utami, E Genatrika</i>	
SELECTION OF OPTIMAL FACTOR LEVEL FROM PROCESS PARAMETERS IN PALM OIL INDUSTRY	346
<i>E Ginting, M M Tambunan</i>	
GENIUS LEARNING STRATEGY OF BASIC PROGRAMMING IN AN ADVENTURE GAME	352
<i>E Junseti, H Saarno, R R Narmalasari</i>	
PLANT LEAF RECOGNITION USING COMPETITIVE BASED LEARNING ALGORITHM	357
<i>E M Imah, Y S Rahayu, A Wintarti</i>	
ENVIRONMENTAL PERFORMANCE MEASUREMENT OF THE SIMPLE URBAN HOUSING IN MARTUBUNG MEDAN	366
<i>E Nababan, N Sulaesan, P Bangsan, E Rosmaini</i>	
DESIGN AND DEVELOPMENT OF IMPACT LOAD SENSOR FOR DYNAMIC TESTING PURPOSES	377
<i>E Permana, Yayat</i>	
DETERMINE THE OPTIMAL SOLUTION FOR LINEAR PROGRAMMING WITH INTERVAL COEFFICIENTS	386
<i>E R Wulan, M A Ramdhani, Indriani</i>	
ECOLOGICAL APPROACH OF CAMPUS WASTEWATER TREATMENT USING CONSTRUCTED WETLAND	392
<i>E T Winanti, E Rahmadyanti, I N Fajarwati</i>	

MANIPULATIVE'S OF FUNCTION TRANSLATION	400
<i>E Sulihurrahmah, T Purnian</i>	
EVALUATION OF PERFORMANCE AN AIR CONDITIONING SYSTEMS USING T-JUNCTION FLASH GAS REFRIGERANT	404
<i>E T Herman, A Setiawan, E S Arifianto, Mutaufiq</i>	
STUDY OF ADJUSTMENT DELAY SCHEME ON IEEE 802.15.4 NETWORKS AT BEACON ENABLED MODE	410
<i>E Yandra</i>	
MPPT BASED ON FUZZY LOGIC CONTROLLER FOR PHOTOVOLTAIC SYSTEM USING PSIM AND SIMULINK	418
<i>E N Yaqin, A G Abdullah, D L Hakim, A B D Nandiyanto</i>	
PARENTAL DEFENCE ON THE OFFSPRING: MATHEMATICAL MODEL AND SIMULATION	430
<i>F Ilahi, J Juwariah, R Karjalimata</i>	
AUGMENTED REALITY (AR) TECHNOLOGY ON THE ANDROID OPERATING SYSTEM IN CHEMISTRY LEARNING	436
<i>F S Irvanyyah, Y M Yusuf, I Farida, M A Ramdhani</i>	
FINITE ELEMENT ANALYSIS ON THE UNLOADING ELASTIC MODULUS OF ALUMINUM FOAMS BY UNIT-CELL MODEL	443
<i>F Triawan, B A Budiman, F B Juangna, L A Prasanto, M Aziz</i>	
DYE SENSITIZED SOLAR CELLS (DSSC) PERFORMANCE REVIEWED FROM THE COMPOSITION OF TITANIUM DIOXIDE (TiO₂)/ZINC OXIDE (ZNO)	451
<i>H Aliah, B Bernardo, F Pujiptasari, A Setiawan, P Pitriana, B W Nuryadin, M A Ramdhani</i>	
EFFECT OF BIODIESEL AND RADIATOR TUBE HEATER ON FUEL CONSUMPTION OF COMPRESSION IGNITION ENGINE	456
<i>H Bisri, D S Wijayanto, Ranto</i>	
ADVENTURE GAME APPLICATION AS A DIGITAL MEDIA TO INTRODUCE BATURRADEN FOLKLORE	465
<i>H Musafidoh, S H Ramadhani</i>	
METHOD COMPARISON OF 3D FACIAL RECONSTRUCTION CORESPONDING TO 2D IMAGE	473
<i>H P A Tjahjuningtjar, P Pujiptasari, Y Yamasari, L Anifah, Igg A Budijahyanto</i>	
A REVIEW OF SPENT LEAD-ACID BATTERY RECYCLING TECHNOLOGY IN INDONESIA: COMPARISON AND RECOMMENDATION OF ENVIRONMENT-FRIENDLY PROCESS	480
<i>H Zakiyya, Y D Dista, R Ellen</i>	
OPTIMIZATION MODEL OF K-MEANS CLUSTERING USING ARTIFICIAL NEURAL NETWORKS TO HANDLE CLASS IMBALANCE PROBLEM	490
<i>Hartono, O S Sitompul, Tulus, E B Nababan</i>	
BIOCOMPATIBLE HYDROGEL FILM OF POLYETHYLENE OXIDE-POLYETHYLENE GLYCOL DIMETACRYLATE FOR WOUND DRESSING APPLICATION	499
<i>Haryanto, Fani, A Mahardian</i>	
IMPROVING WORK SYSTEM DESIGN USING MACRO-ERGONOMICS APPROACH IN RUBBER PROCESSING PLANT	506
<i>D Wahyuani, I Budiman, H Nusatnan, K Wijaya</i>	
LEARNING MATERIAL OF CHEMISTRY IN HIGH SCHOOL USING MULTIPLE REPRESENTATIONS	512
<i>I Farida, I Heley, I Fitriani, M A Ramdhani</i>	
ANALYSIS OF NEW STUDENT SELECTION USING CLUSTERING ALGORITHMS	518
<i>I M Suartama, A I N Hidayat</i>	
ECONOMIC VALUE OF PALM PLANTATION IN NORTH SUMATERA AND CONTRIBUTION TO PRODUCT DOMESTIC REGIONAL BRUTO	524
<i>I Muda, H S Siregar, S A Sembiring, Ramli, H Manurung, Z Zein</i>	
PERFORMANCE MEASUREMENT ANALYSIS OF PALM COOPERATIVE COOPERATION WITH USING BALANCED SCORECARD	530
<i>I Muda, F Rosmarwati, H S Siregar, Ramli, H Manurung, T Ranaus</i>	
INSTITUTIONAL FISHERMEN ECONOMIC DEVELOPMENT MODELS AND BANKING SUPPORT IN THE DEVELOPMENT OF THE INNOVATION SYSTEM OF FISHERIES AND MARINE AREA IN NORTH SUMATERA	536
<i>I Muda, Rahmania, Marhayanie, A S Putra</i>	

PART 2

HOW TO IMPROVE SERVICE QUALITY IN SCHOOL COUNSELLING SERVICES?	542
<i>M Idat, A S Gina, M N Ardi</i>	
CARDIORESPIRATORY ENDURANCE AND BALANCE OF ELDERLY DEMENTIA PATIENTS IN NURSING HOME	549
<i>I N Arshinta, I A Fitriana, T Adikusuma, S Rohaedi, T P Putri</i>	
COMPARISON OF PERIODIC REVIEW POLICY AND CONTINUOUS REVIEW POLICY FOR THE AUTOMOTIVE INDUSTRY INVENTORY SYSTEM	553
<i>I Rizkyu, K Syahputri, R M Sari, Anizar, I Siregar, E Ginting</i>	
APPLICATION OF DESKTOP-BASED BATIK INFORMATION SYSTEM	559
<i>I Widiaty, I S Rizu, A G Abdullah, S R Muharog</i>	
MATHROID APPLICATION DEVELOPMENT ON THREE-DIMENSIONAL GEOMETRY MATERIALS	565
<i>J Juwariah, A H Syaf, I Rohimah, H Sugiur, R Kariadinata</i>	
THE TENSILE STRENGTH EVALUATION OF UNTREATED AGEL LEAF/JUTE/GLASS FIBER-REINFORCED HYBRID COMPOSITE	572
<i>K A Iman, Jansari, Kusmono, H Hestiarwan</i>	
ANALYSIS OF CAUSES OF DEFECTS GLOVES AND BAR SOAP USING FAILURE MODE AND EFFECT ANALYSIS (FMEA) IN XYZ COMPANY	578
<i>K Siregar, S F Siregar</i>	
IMPROVING ASSEMBLY LINE BALANCING USING MOODIE YOUNG METHODS ON DUMP TRUCK PRODUCTION	584
<i>K Syahputri, R M Sari, Anizar, I Rizkyu, J Leviza, I Siregar</i>	
MORPHOLOGICAL CHARACTERIZATION OF ETLINGERA ELATIOR (JACK) EXPLORED IN SUKABUMI, WEST JAVA, INDONESIA	590
<i>I Chaidir, C Hidayat, A Supriadin, A Aina, Nuryan, M A Ramdhani</i>	
IMPLEMENTATION OF AUTOMATION SYSTEM FOR HUMIDITY MONITORING AND IRRIGATION SYSTEM	593
<i>I Kamelia, M A Ramdhani, A Faruqi, V Rifadipriyama</i>	
REVIEW OF SOME EXISTING WORK FOR SELF-RECOVERY FRAGILE WATERMARKING ALGORITHMS	598
<i>I Rakhmawati, N Rochmanati</i>	
THE IMPLEMENTATION OF FLOOR-AREA RATIO IN THE EASTERN CORRIDOR OF JALAN IR. H. DJUANDA BANDUNG	605
<i>I Widaningsih, T Megayanti, R Minggra</i>	
IMPROVEMENT OF CIBADUYUT HOUSING DISTRICT TO FACING CITY GROWTH PHENOMENA, BASED ON "SYSTEM APPROACH TO ARCHITECTURE" CONCEPT	612
<i>L Yunita, R T Rusono, D Abdiat H</i>	
OPTIMIZATION OF RECTILINEAR MOTION EXPERIMENTS USING TRACKER APPLICATION	619
<i>M G Nugraha, K H Kirana, F Nugraha, E A Nurintani, F N Sholihat</i>	
EFFECT OF PRUNUS DULCIS EXTRACT AGAINST TOTAL CHOLESTEROL LEVEL IN MICE THAT GIVEN MONOSODIUM GLUTAMATE	626
<i>M I Sari, N B Rahmat, D W Wijaya</i>	
DESIGNING WEB DATABASE APPLICATION FOR LOCAL MEDICINAL PLANTS OF GORONTALO USING MVC ARCHITECTURE	632
<i>M Lattief, N Kandungangk, R Yusuf</i>	
MICROENCAPSULATION OF DRAGON FRUIT (HYLOCEREUS POLYRHIZUS) PEEL EXTRACT USING MALTODextrin	640
<i>M N Handayani, I Khoerunnisa, D Cakrawati, A Sulastri</i>	
E-RUBRIC: SCIENTIFIC WORK BASED ON ANDROID FOR EXPERIMENTAL PHYSIC	647
<i>M N Hudho, S D Aji, C Huda</i>	
DEVELOPMENT OF VOCATIONAL INTERACTIVE MULTIMEDIA BASED ON MOBILE LEARNING	653
<i>M S Sembawati, R C Wibawa, Munro, S C Wibawa</i>	
COMPETITIVE ADVANTAGE: MEDIATOR OF DIVERSIFICATION AND PERFORMANCE	660
<i>M Sihir</i>	
INCLUSION PROPERTIES OF ORLICZ SPACES AND WEAK ORLICZ SPACES GENERATED BY CONCAVE FUNCTIONS	666
<i>M Taqiyuddin, A A Mastu</i>	

IMPLEMENTATION OF SHARING KNOWLEDGE MANAGEMENT IN INTERNSHIP PROGRAM USING WEB-BASED INFORMATION SYSTEM	671
<i>M Somantri, A Dyohar, A G Abdullah, A Juhana, S Aryudi</i>	
ON THE DESIGN OF WATERING AND LIGHTING CONTROL SYSTEMS FOR CHRYSANTHEMUM CULTIVATION IN GREENHOUSE BASED ON INTERNET OF THINGS	680
<i>N Fajrin, I Taufik, N Ismail, I Kamelia, M A Ramdhani</i>	
INVESTORS PSYCHOLOGY: MEDIATOR OF CSR AND MARKET CAPITALIZATION	686
<i>N H Rudi, I Primiana, E T Sale, M F Cahyandito</i>	
THE EFFECT OF AMPLITUDE MODULATION INDEX AND FREQUENCY MODULATION INDEX ON TOTAL HARMONIC DISTORTION IN 1-PHASE INVERTER	692
<i>N Ismail, A Permadi, A Ridiyanto, B Susanto, M A Ramdhani</i>	
PERFORMANCE OF PELTON TURBINE FOR HYDROELECTRIC GENERATION IN VARYING DESIGN PARAMETERS	698
<i>N Kholifah, A C Setyawan, D S Wijayanto, I Widiastuti, H Saputra</i>	
A RESPONSIVE WEB-BASED QR CODE FOR INVENTORY IN THE LABORATORY OF INFORMATICS, UNESA	703
<i>N Rochmanwati, I G P A Buditjahjanto, R E Putra, A Y Wicaksono</i>	
PRELIMINARY STUDY OF FAILURE ANALYSIS ON TUBE MATERIAL BOILER BASED ON PRESSURE ASPECT	710
<i>N S Drastiwati, H Zakyya, F Y Utama, W D Kurniatman</i>	
A MATHEMATICS MODEL FOR DETERMINATING THE VALUE OF IJARAH CONTRACT	716
<i>N Samarti</i>	
PHYSIOLOGICAL DEMANDS OF PLAYING FIELD HOCKEY GAME AT SUB ELITE PLAYERS	722
<i>N W Kusmanik, Y S Rahayu, B Ratnay</i>	
DETERMINATION OF SODIUM, POTASSIUM, MAGNESIUM, AND CALCIUM MINERALS LEVEL IN FRESH AND BOILED BROCCOLI AND CAULIFLOWER BY ATOMIC ABSORPTION SPECTROMETRY	727
<i>Nerdy</i>	
GREEN AWARENESS AND PURCHASE INTENTION FOR ORGANIC PRODUCTS	735
<i>O I B Hariyanto</i>	
FATTY ACID ANALYSIS OF LIPID EXTRACTED FROM RATS BY GAS CHROMATOGRAPHY-MASS SPECTROMETRY METHOD	740
<i>P I Utami, W S Rahayu, I Nugraha, A N Rochana</i>	
THE EMERGING WIRELESS BODY AREA NETWORK ON ANDROID SMARTPHONES: A REVIEW	744
<i>P Puspitaningtya, A Widodo, E Yandra</i>	
STUDY ON THE SEAWATER SURFACE ELEVATION THROUGH NUMERICAL MODELING APPROACH IN GULF OF MANADO	749
<i>P T D Rompas, J D I Manungku</i>	
MODIFIED POLYSULFONE ULTRAFILTRATION MEMBRANE FOR HUMIC ACID REMOVAL DURING PEAT WATER TREATMENT	756
<i>P T P Aryanti, A M Noviyani, M F Kurnia, D A Rahayu, A Z Nisa</i>	
SHORT TERM LOAD FORECASTING FOR WEEKENDS IN INDONESIA: COMPARISON OF THREE METHODS	765
<i>E N Yaqin, A G Abdullah, D Chandra, T A Pratiwi, S Adhigumartin, A M Shidiq, A J Ramadhan, R P Putra, A F Alfariq, M F A Mustaqin, A B D Nandiyanto</i>	
THE INFLUENCE OF BASE COURSE TYPES ON RIGID PAVEMENT CONCRETE STRENGTH	774
<i>Purnawan, S Utami</i>	
IMPLEMENTATION OF NEURAL NETWORK TO DETERMINE THE NEW COLLEGE STUDENTS	780
<i>R E Putra, A I Nurhidayat, A Y Wicaksono</i>	
THE ENACTMENT OF MATHEMATICS CONTENT KNOWLEDGE AND MATHEMATICS PEDAGOGICAL CONTENT KNOWLEDGE IN TEACHING PRACTICE OF RATIO AND PROPORTION: A CASE OF TWO PRIMARY	786
<i>R Ekawati, F Lin, K Yang</i>	
ISOLATION AND CHARACTERIZATION OF OIL-DEGRADING BACTERIA FROM ONE OF SOUTH SUMATERA'S OILFIELD	795
<i>I A Purwasena, D I Anati, R Firmawati, Q Afinita</i>	
SEQUENCING OF DUST FILTER PRODUCTION PROCESS USING DESIGN STRUCTURE MATRIX (DSM)	802
<i>R M Sari, A R Matondang, K Syahputri, Anizar, I Siregar, I Rizky, C Ursula</i>	

CROSSING RIVERS PROBLEM SOLUTION WITH BREADTH-FIRST SEARCH APPROACH	808
<i>R Ratnadewi, E M Sartika, R Rahim, B Anwar, M Syahri, H Winita</i>	
IMPLEMENTATION OF AUTOMATIC CLUSTERING ALGORITHM AND FUZZY TIME SERIES IN MOTORCYCLE SALES FORECASTING	814
<i>Rasim, F Junaedi, R Wirantika</i>	
PREPARATION OF CARBON-CHITOSAN-POLYVINYL CHLORIDE (CC-PVC) MATERIAL AND ITS APPLICATION TO ELECTROCHEMICAL DEGRADATION OF METHYLENE BLUE IN SODIUM CHLORIDE SOLUTION	818
<i>Riyanto, A D Pratiidha</i>	
ELECTROCHEMICAL SYNTHESIS OF ETHANOL FROM CARBON DIOXIDE USING COPPER AND CARBON-POLYVINYL CHLORIDE (C-PVC) ELECTRODE	827
<i>Riyanto, T A Afiani</i>	
DEVELOPMENT MATHEMATIC ASSESSMENT TO INCREASE MATHEMATICAL PREREQUISITE ABILITY ON THE STUDENT WITH LEARNING DISABILITIES IN INCLUSIVE ELEMENTARY SCHOOL	836
<i>S T U Robiansyah, F Nanang, Hilayat</i>	
CREATIVE DIGITAL WORKSHEET BASE ON MOBILE LEARNING	843
<i>S C Wibawa, R Cholifah, A W Utami, A I Nurhidayat</i>	
COMPUTER ANIMATION WITH ADOBE FLASH PROFESSIONAL CS6 IN NEWTON'S LAW	852
<i>S D Aji, M N Hulha, C Huda, G Gusfan</i>	
PERFORMANCE 'S' TYPE SAVONIUS WIND TURBINE WITH VARIATION OF FIN ADDITION ON BLADE	855
<i>S F Pamungkas, D S Wijayanto, H Saputra, I Widanastiti</i>	
ANALYSIS OF RULES FOR ISLAMIC INHERITANCE LAW IN INDONESIA USING HYBRID RULE BASED LEARNING	862
<i>S Khusey'Ah, M Irfan, D S Maylirwati, O S Mukhlis</i>	
INVESTIGATION ON MUNICIPAL SOLID WASTE CHARACTERISTICS FROM COMMERCIAL SOURCES AND THEIR RECYCLING POTENTIAL IN PADANG CITY, INDONESIA	868
<i>S Raharjo, Y Ruslinda, Y S Bachtiar, R A Regia, M Fadhil, I Rochman, T Matsumoto</i>	
EXTRA N-HEKSANA ANTIFUNGI CREAM ALPINIA GALANGA	877
<i>S Rahmatullah, N Windeyuni, N N Fadilah</i>	
CONVERSION OF CARBON DIOXIDE INTO ETHANOL BY ELECTROCHEMICAL SYNTHESIS METHOD USING CU-ZN ELECTRODE	883
<i>Riyanto, S Ramadan, S Fariduddin, A R Aminudin, A K Hayati</i>	
MULTIMEDIA BASED ON SCIENTIFIC APPROACH FOR PERIODIC SYSTEM OF ELEMENT	892
<i>S Sari, D M Aryana, C Z Subarkah, M A Ramdhani</i>	
THEORETICAL INVESTIGATION OF INCLUSION COMPLEX BETWEEN OMEPRAZOLE ENANTIOMERS AND CARBOXYMETHYL-β-CYCLODEXTRIN	898
<i>S Setiadji, C D D Sunlari, M A Ramdhani, A B K Umam, A L Iwanryah</i>	
NEEDS AND PROBLEMS OF POSBINDU PROGRAM: COMMUNITY HEALTH VOLUNTEERS PERSPECTIVE	904
<i>S T Putri, S Andriyanti</i>	
ACCURATION OF TIME SERIES AND SPATIAL INTERPOLATION METHOD FOR PREDICTION OF PRECIPITATION DISTRIBUTION ON THE GEOGRAPHICAL INFORMATION SYSTEM	909
<i>S Y J Prasetyo, K D Hartono</i>	
MUCOLYTIC ACTIVITY TEST OF SHALLOT EXTRACT (<i>ALLIUM ASCALONICUM</i> L) BY IN VITRO	917
<i>D A Derosanti, M A Dhina, S R Mubaraq</i>	
THE CFD SIMULATION OF CYCLONE SEPARATOR WITHOUT AND WITH THE COUNTER-CONE IN THE GASIFICATION PROCESS	922
<i>H Saputra, T Firdani, R Muslim, Y Estriyanti, D S Wijayanto, S Lasmini, Khaniffudin</i>	
BIRD ON YOUR SMARTPHONE: HOW TO MAKE IDENTIFICATION FASTER?	932
<i>T Hilayat, I S Kurniawan, P S Taplaw</i>	
BUILDING COVERAGE RATIO AT THE EASTERN CORRIDOR OF JALAN IR. H. DJUANDA BANDUNG	940
<i>T Megayanti, L Widaningsih, R Minggra, N I K Dewi</i>	
THE CONCEPT OF THE RELATIONSHIP BETWEEN INFORMATION SYSTEM MATURITY AND INDUSTRY PERFORMANCE IN INDONESIA	945
<i>V R Pallingan, T P Maris</i>	

EFFECT OF WIND ANGLE DIRECTION ON CARBON MONOXIDE (CO) CONCENTRATION DISPERSION ON TRAFFIC FLOW IN PADANG CITY	954
<i>V S Buchtiar, P Purnawan, R Afranita, N Dahlia</i>	
IMPLEMENTATION OF MAMDANI FUZZY METHOD IN EMPLOYEE PROMOTION SYSTEM	961
<i>W B Zulfikar, Jumadi, P K Prasetyo, M A Ramdhani</i>	
IMPLEMENTATION OF STEAM EDUCATION TO IMPROVE MASTERY CONCEPT	966
<i>W Liliawati, H Rismayati, Purnanto, G Aristantia</i>	
QIBLA FINDER AND SHOLAT TIMES BASED ON DIGITAL COMPASS, GPS AND MICROPROCESSOR	972
<i>W S M Sanjaya, D Anggrani, F J Nurrahman, W G Kresnadjaja, I P Dewi, Mira, H Aliah, L Marlina</i>	
A POLYCHORIC CORRELATION TO IDENTIFY THE PRINCIPLE COMPONENT IN CLASSIFYING SINGLE TUITION FEE CAPABILITIES ON THE STUDENTS SOCIO-ECONOMIC DATABASE	981
<i>W Yustanti, Y Anistiyasari</i>	
THE PERFORMANCE OF CHROME-COATED COPPER AS METALLIC CATALYTIC CONVERTER TO REDUCE EXHAUST GAS EMISSIONS FROM SPARK-IGNITION ENGINE	990
<i>Warju, S P Harso, Soenarno</i>	
THE SYSTEM OF INVENTORY FORECASTING IN PT. XYZ BY USING THE METHOD OF HOLT WINTER MULTIPLICATIVE	1005
<i>W Shaleh, Rasin, Waliyudin</i>	
IMPLEMENTATION OF NEAREST NEIGHBOR USING HSV TO IDENTIFY SKIN DISEASE	1014
<i>Y A Gerhana, W B Zulfikar, A H Ramadani, M A Ramdhani</i>	
INTEGRATION HEAD MOUNTED DISPLAY DEVICE AND HAND MOTION GESTURE DEVICE FOR VIRTUAL REALITY LABORATORY	1019
<i>Y A Rengganis, M Safrodin, S Sukaridhoto</i>	
ANALYSIS IMPACT OF DISTRIBUTED GENERATION INJECTION TO PROFILE OF VOLTAGE AND SHORT-CIRCUIT FAULT IN 20 KV DISTRIBUTION NETWORK SYSTEM	1027
<i>Y Mulyadi, T Sucita, M D Rahmawan</i>	
FAST DEPICTION INVARIANT VISUAL SIMILARITY FOR CONTENT BASED IMAGE RETRIEVAL BASED ON DATA-DRIVEN VISUAL SIMILARITY USING LINEAR DISCRIMINANT ANALYSIS	1042
<i>Y Wilardi, W Setiawan, E Nugraha</i>	
GEOLOGICAL ENGINEERING CHARACTERISTICS OF THE RESIDUAL SOIL: IMPLEMENTATION FOR SOIL BEARING CAPACITY AT GAYUNGAN, SURABAYA, EAST JAVA	1047
<i>Y Y Rukmana, M Ridwan</i>	
THE ROLE OF TEAK LEAVES (TECTONA GRANDIS), RHIZOBIUM, AND VESICULAR-ARBUSCULAR MYCORRHIZAE ON IMPROVING SOIL STRUCTURE AND SOIL NUTRITION	1055
<i>Yuliani, Y S Rahayu</i>	
INTEGRATION TELEGRAM BOT ON E-COMPLAINT APPLICATIONS IN COLLEGE	1062
<i>M A Rovid, A Rachmadany, M T Multazam, A B D Nandiyanto, A G Abdullah, I Widiaty</i>	
THE EFFECTIVENESS OF FULL DAY SCHOOL SYSTEM FOR STUDENTS' CHARACTER BUILDING	1068
<i>A Benawa, R Peter, S Maksana</i>	
EFFECT OF GINGER DRINKS ON NAUSEA VOMITING IN THE FIRST TRIMESTER OF PREGNANCY	1074
<i>P A Kusumawardani, S Cholifah, M T Multazam, A B D Nandiyanto, A G Abdullah, I Widiaty</i>	
CLASSIFICATION OF INDONESIAN QUOTE ON TWITTER USING NAÏVE BAYES	1078
<i>A Rachmadany, Y M Prasanto, Gunawan, M T Multazam, A B D Nandiyanto, A G Abdullah, I Widiaty</i>	
THE IMPLEMENTATION OF BLENDED LEARNING USING ANDROID-BASED TUTORIAL VIDEO IN COMPUTER PROGRAMMING COURSE II	1083
<i>C Huda, M N Huda, N Ain, A B D Nandiyanto, A G Abdullah, I Widiaty</i>	
THE DEVELOPMENT OF DISPATCHER TRAINING SIMULATOR IN A THERMAL ENERGY GENERATION SYSTEM	1089
<i>D L Hakim, A G Abdullah, Y Mulyadi, B Hasan</i>	
Author Index	

Study on the Seawater Surface Elevation through Numerical Modeling Approach in Gulf of Manado

P T D Rompas* and J D I Manongko

Universitas Negeri Manado, Tondano 95618, Indonesia

*parabelcmrompas@unima.ac.id

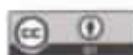
Abstract. This paper presents the seawater surface elevation in Gulf of Manado with numerical approach. The RANS shallow water flow equation is used to obtain a numerical equation of seawater surface elevation with a semi-implicit approximation approach in which the pressure distribution in the vertical layer of seawater is assumed hydrostatic. The results found that the high seawater level is not more than 1.81 m upper seawater level and 1.30 m under seawater level respectively. The results can be used as a recommendation to predict the condition of sea waves in the Gulf of Manado.

1. Introduction

The horizontal and vertical motion of seawater occurs caused by the wind stress at the sea surface. If surface seawater is a divergence, water at the bottom will rise to surface and this situation will be happened upwelling; conversely, where it is a convergence and will happened downwelling. For condition where a system of cyclonic wind on surface seawaters where the average movement of the wind-driven layer is to the right of the wind which causing divergence of surface water and upwelling, and the sea-surface is lowered and the thermocline is raised, it is called Ekman pumping. In condition inverse correspond in anticyclone wind is convergence and sinking (downwelling), it causes the sea-surface to slope upwards the middle of the gyre [1]. It will produce a sea wave called seawater surface elevation. Transport at the position of Gulf of Manado is convergence.

A numerical modeling can predict seawater surface elevation. It conducted by [2-5] in the Straits of Bunaken and Bangka, North Sulawesi, Indonesia. The simulation seawater surface elevation from shallow water flows with a free surface correction method [6]. The distribution of seawater surface elevation with respect to a reference level (m) by study on modeling shallow water wakes using a hybrid turbulence model [7]. Calculating of seawater surface elevation by using the semi-lagrangian method and they compute the non-linear response of the full model due to a shear stress that comes from the action of the wind at the ocean surface [8]. Simulated seawater surface elevation in the variations of typical seasonal corresponding to the period 1956-1960 from the surface wind stress in the Aral Sea [9]. Also, Implemented fully-implicit time integration schemes in a version of parallel ocean program for calculation of seawater surface elevation by its simulation in the North Atlantic [10].

The objective of this study was to get distribution of seawater surface elevation by using numerical modeling in the Gulf of Manado, North Sulawesi, Indonesia.



2. The free surface navier-stokes equations

The conservation of energy equation, which would express the variations in temperature, particularly taking into account dissipation by friction, will be put aside and temperature will later appear as a tracer solely responsible for the effects of buoyancy. Let ρ be the density of the fluid, and the velocity vector, whose components are U, V, W . Conservative of the fluid mass contained in a domain is expressed as [11]

$$\frac{d}{dt} \left(\int_{\Omega} \rho d\Omega \right) = 0 \quad (1)$$

where Ω is the domain of study (see figure 1) and t is time.

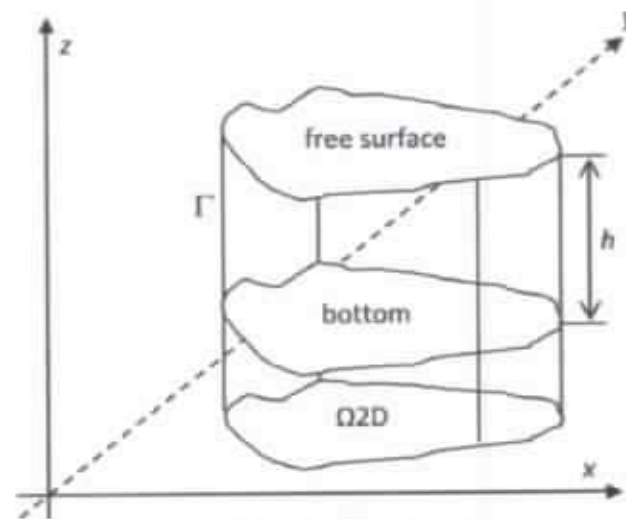


Figure 1. Modelling domain

If we assume hydrostatic pressure, and by using the decomposition of preceding Reynolds, the realized average Navier-Stokes equations are written [11, 12]:

Continuity equation

$$\frac{\partial \bar{u}}{\partial x} + \frac{\partial \bar{v}}{\partial y} + \frac{\partial \bar{w}}{\partial z} = 0 \quad (2)$$

Momentum equation

$$\frac{\partial \bar{u}}{\partial t} + \bar{u} \frac{\partial \bar{u}}{\partial x} + \bar{v} \frac{\partial \bar{u}}{\partial y} + \bar{w} \frac{\partial \bar{u}}{\partial z} = -g \frac{\partial \eta}{\partial x} + \text{div} \left(\nu_{eff} \overline{\text{grad}(\bar{u})} \right) + f_{cor} \bar{v} \quad (3)$$

$$\frac{\partial \bar{v}}{\partial t} + \bar{u} \frac{\partial \bar{v}}{\partial x} + \bar{v} \frac{\partial \bar{v}}{\partial y} + \bar{w} \frac{\partial \bar{v}}{\partial z} = -g \frac{\partial \eta}{\partial y} + \text{div} \left(\nu_{eff} \overline{\text{grad}(\bar{v})} \right) - f_{cor} \bar{u} \quad (4)$$

Free surface equation

$$\frac{\partial \eta}{\partial t} + \frac{\partial}{\partial x} \left(\int_{-h}^{\eta} \bar{u} dz \right) + \frac{\partial}{\partial y} \left(\int_{-h}^{\eta} \bar{v} dz \right) = 0 \quad (5)$$

where ν_{eff} is an effective diffusion taking of account turbulent viscosity and dispersion, $\nu_{eff} = \nu + \nu_t$. This effective diffusion is given by means of a model of turbulence adapted to the problem considers. Conservative of the fluid mass becomes Realized Average Navier-Stokes (RANS) shallow water flow equations (as in equations (2) to (5)) which were as a basic for the computation of numerical modeling.

3. Numerical modeling approach

The numerical modeling equations used diffusion step [11] with a general semi-implicit discretization of the momentum equations in equations (3) and (4) to get the velocities while the seawater surface elevation used equation (5). The velocities in x , y , and z directions, we can write in the more compact matrix form as in [2-5]. For determine the seawater surface elevation (as in equation (5)) in form numerical modeling, we can be written in the matrix notation form [2, 3]

$$\eta_{i,j}^{n+1} = \eta_{i,j}^n - \frac{\Delta t}{\Delta x} \left[(\Delta Z_{i+1/2,j})^T \mathbf{U}_{i+1/2,j}^{n+1} - (\Delta Z_{i-1/2,j})^T \mathbf{U}_{i-1/2,j}^{n+1} \right] - \frac{\Delta t}{\Delta y} \left[(\Delta Z_{i,j+1/2})^T \mathbf{V}_{i,j+1/2}^{n+1} - (\Delta Z_{i,j-1/2})^T \mathbf{V}_{i,j-1/2}^{n+1} \right] \quad (6)$$

4. Methods

The Gulf of Manado is located between the Pacific Ocean and the Sulawesi Sea (Celebes Sea) whose area is approximately 300 km² (Figure 2), with an average width about 2.2 km and down to 79 meters deep (figure 3).

The three-dimensional current circulation in the Gulf of Manado is simulated using the present model with a 174 x 318 finite difference mesh of equal $\Delta x = \Delta y = 7$ m. The numerical solutions have been achieved using four vertical layers and an integration time $\Delta t = 0.4$ sec, and inlet volume transports at sections Singkil river, North, and South of Manado bay (figures 2 and 3) are 0.1 Sv (100000 m³/s). In addition, there are two of the current circulations in the Gulf of Manado i.e. low tide currents and high tide currents.

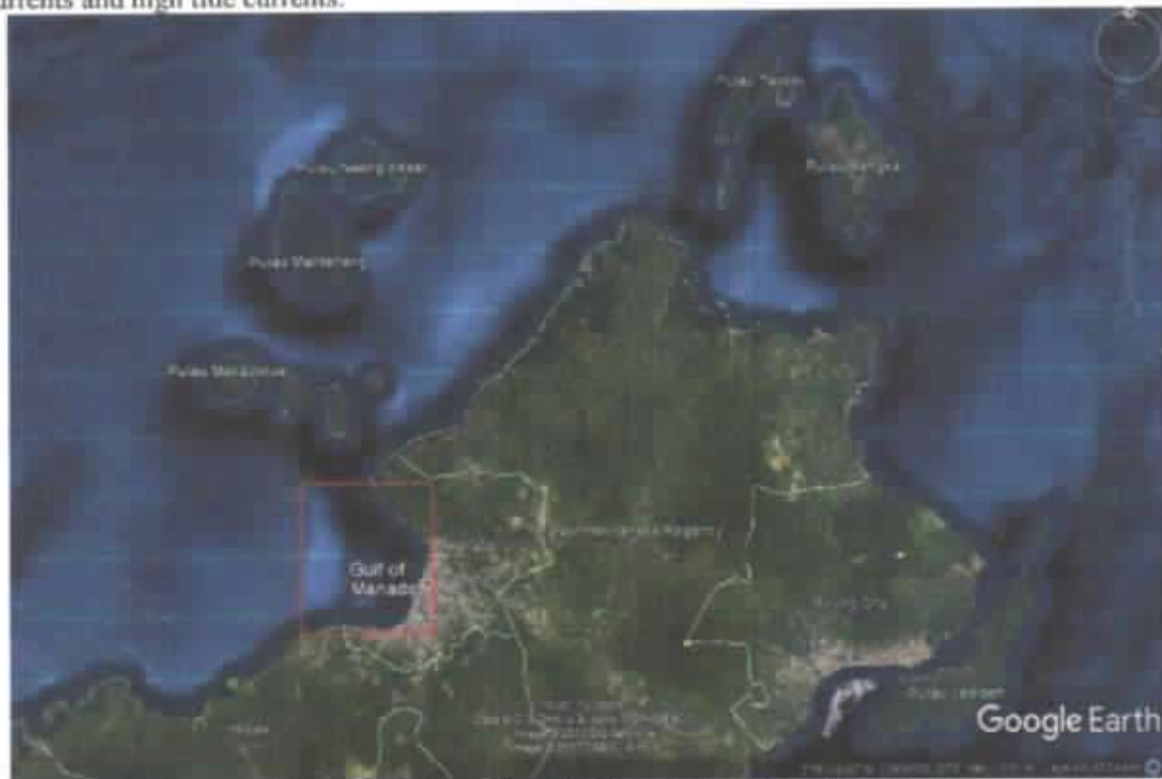


Figure 2. Gulf of Manado, North Sulawesi, Indonesia

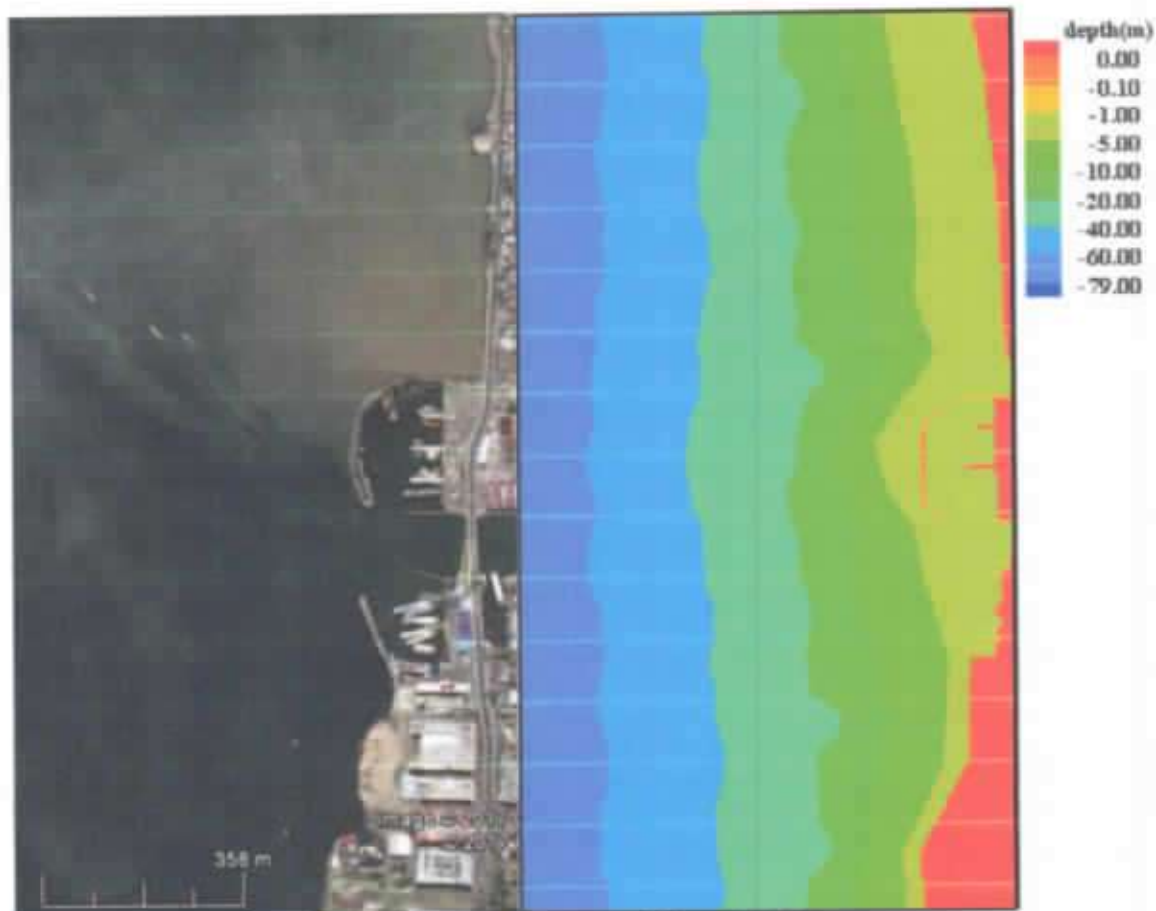


Figure 3. Bathymetry of Manado Gulf

The three-dimensional semi-implicit numerical method used in this study. The solution of a numerical model in calculating the velocities of \bar{u} , \bar{v} and \bar{w} respectively, we can explain step by step as follows:

- *start* is the beginning of numerical computation.
- *read data* is the process to read all data that using the all of parameters in equations 2 to 5 and table 1 which needed in calculation and also read data of variables; time of calculating maximum for doing iteration.
- *generation of the mesh* is the process to make the computational meshes which using Arakawa C-grid [13] and notations (spatial discretization).
- *generation of the index* is the process to make the index and generate the layers of vertical axis (depth) and generate index of boundary layers as denote calculating in the meshes.
- *initial conditions* are the process to make the initial conditions of velocities and seawater surface elevation, and also to make the coordinates for the result simulations in the Tec plot program.
- *the quantity of calculation* with iteration do-process until maximum iteration.
- *boundary conditions* are the process which give boundary conditions of calculation domain in the Gulf of Manado. Also, generation and determination about boundaries of velocities when enter and exit the Gulf of Manado bases data of investigation results.
- *calculate advections in \bar{u} and \bar{v}* are the process for calculation advection of \bar{u} and \bar{v} .
- *turbulence model* is the process calculating the turbulence of a mixing-length model [7] (for three-dimensional calculation). In this process also calculated diffusion step.

- calculate components of velocities (\bar{u} , \bar{v} and \bar{w}) are the process for calculating of horizontal velocities \bar{u} and \bar{v} (equations 4 and 5) with a linear three-diagonal.
- calculate seawater surface elevations are the process for calculating equation 6 which is values of the seawater surface elevation with a linear five-diagonal system.
- print results are the process for print results calculation that we necessary.
- $T > T_{max}$ is the process to execute determination when the iteration has been greater than maximum iteration, if *no* then process will be go to the quantity of calculation for continue to calculate again, and if *yes* then it goes to "finish".
- *finish* is the process where the calculation is stop.

Table 1. Parameter value for 3D-numerical simulations

Parameter	Value	Parameter	Value
g	9.81 m s^{-2}	ρ_s	1024 kg/m^3
Cz	48	Δx	7 m
τ_o	2 days	Δy	7 m
τ_i	1 day	Δz	1 m
discharge	0.1 Sv	Δt	0.5 sec

Table 1 shows a discharge is 0.1 Sv ($0.1 \times 10^6 \text{ m}^3/\text{s}$). τ_o and τ_i are relaxation timescales at outflow and inflow conditions respectively [14]. Cz is Chezy coefficient and ρ_s is density of seawater. Δx , Δy , and Δt are space step in x direction, space step in y direction, and time step respectively.

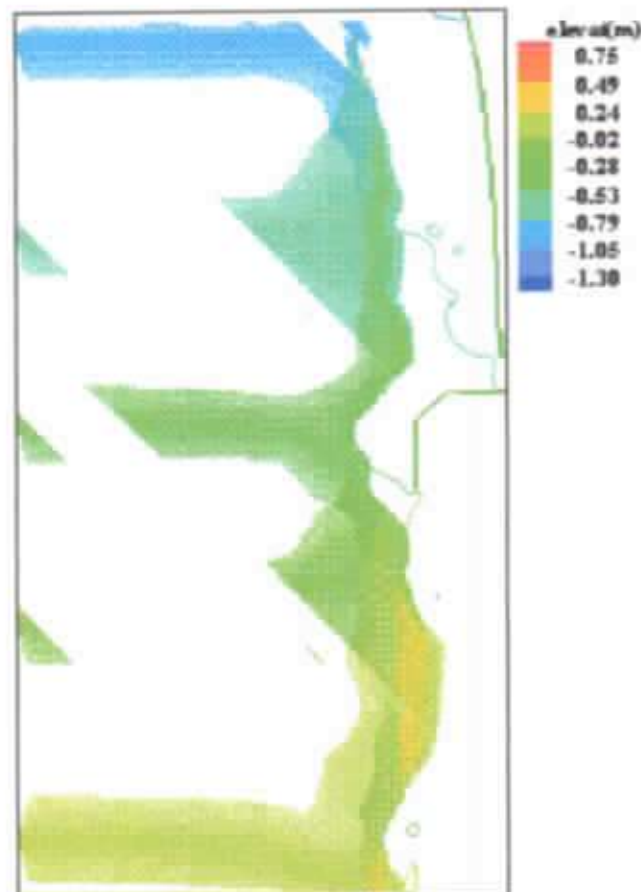


Figure 4. Simulations of seawater surface elevation distributions when low tide currents at discharge of 0.1 Sv

5. Results and discussion

The numerical modeling results we can see in figures 4 and 5 which are in the forms of simulations i.e. 3D-simulations (showed in 2D) when low tide currents and high tide currents. Figure 4 shows distributions of seawater surface elevation when low tide currents. High seawater level when low tide currents is biggest around Southside which the maximum of 75 cm and Northside locations of 130 cm under seawater level. Whereas when high tide currents, there is 181 cm of maximum high seawater level in Northside and the minimum of 117 cm under seawater level in Southside (figure 5). The distributions of seawater surface elevation when low tide currents in Eastside are 2 cm, Westside around 28-79 cm, and Center side around 28-53 cm respectively under seawater level. Whereas when high tide currents in Eastside same as Westside around 32-107 cm, and Center side around 70 cm respectively upper seawater level.

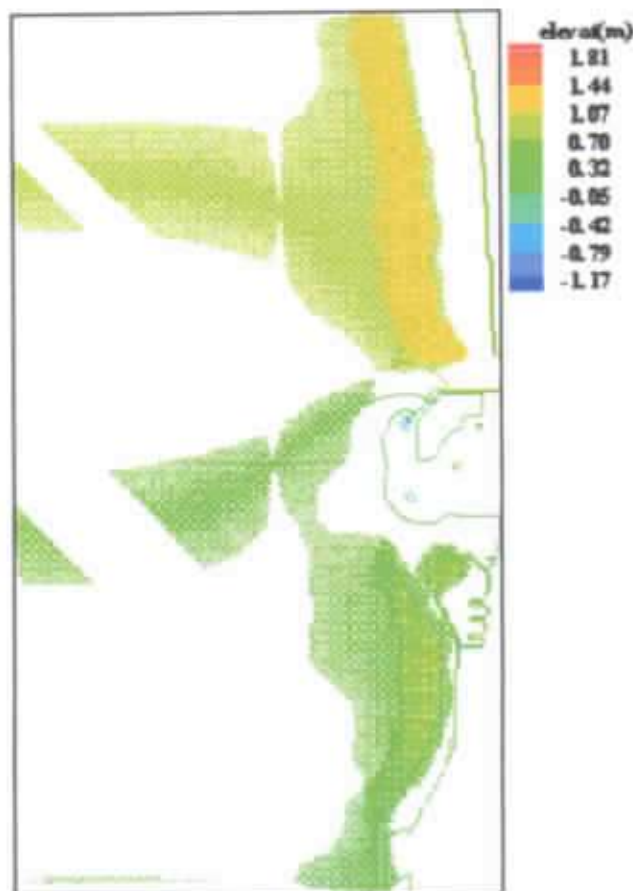


Figure 5. Simulations of seawater surface elevation distributions when high tide currents

The high seawater level occurs when high tide currents greater than low tide currents. It caused by the influence of velocities of seawater when high tide currents greater than when low tide currents [3]. The other effect is the horizontal and vertical movement of seawater results in the wind stress at the sea-surface when high tide currents greater than when low tide currents [1, 10].

6. Conclusion

The seawater surface elevation by numerical modeling approach in the Gulf of Manado, North Sulawesi, Indonesia has been investigation. The distributions of high seawater level were 1.81 m upper seawater level and 1.30 m under seawater level respectively. The results can be used as a recommendation to predict the condition of sea waves in the gulf of Manado.

Acknowledgments

The authors are grateful for DRPM, Ministry of Research, Technology, and Higher Education of the Republic of Indonesia who has given funding all of the research activities, and also thank the Rector of Manado State University, Indonesia who has supported this research.

References

- [1] Broomans P 2003 *Numerical Accuracy in Solution of the Shallow-Water Equations* (Master thesis, TU Delft & WL, Delft Hydraulics)
- [2] Rompas P T D and Manongko J D I 2016 Numerical simulation of marine currents in the Bunaken Strait, North Sulawesi, Indonesia *Int. Conf. on Innovation and Vocational Education IOP Conf. Series: Materials Science and Engineering* **128**(012003) 1-7
- [3] Rompas P T D, Sangari F J, and Taunaumang H 2017 Study on marine current with approach of a numerical model for marine current power plant (PLTAL) in the Bangka Strait North Sulawesi *Proceedings-2016 International Seminar on Application of Technology for Information and Communication, ISEMANTIC 2016. IEEE* **1** 104-110.
- [4] Rompas P T D, Taunaumang H, and Sangari F J 2017 A numerical design of marine current for predicting velocity and kinetic energy *Indonesian Journal of Electrical Engineering and Computer Science* **5**(2) 401-409.
- [5] Rompas P T D, Taunaumang H, and Sangari F J 2017 A numerical model of seawater volume and velocity dynamic for marine currents power plant in the Bangka Strait, North Sulawesi, Indonesia *IOP Conference Series: Materials Science and Engineering* **180**(012100) 1-7.
- [6] Chen X 2003 A free-surface correction method for simulating shallow water flows *J. Comput. Phys.* **189** 557-578
- [7] Rodriguez-Cuevas C, Couder-Castaneda C, Flores-Mendez E, Herrera-Diaz I E, and Cisneros-Almazan R 2014 Modelling shallow water wakes using a hybrid turbulence *Journal of Applied Mathematics* **1** 1-10.
- [8] Claeysen J R, Garibotti C, and Vielmo S 2006 The free surface of a coupled ocean-atmosphere model due to forcing effects *Mathematics and Computer in Simulation* **73** 114-124.
- [9] Sirjacobs D, Gregoire M, Delhez E, and Nihoul J C J 2004 Influence of the aral sea negative water balance on its seasonal circulation patterns: use of a 3D hydrodynamic model *Journal of Marine System* **47** 51-66.
- [10] Balasubramanya T N, Taylor M, and Lorenz J 2006 Ocean modelling for climate studies: Eliminating short time scales in long-term, high resolution studies of ocean circulation *Mathematical and Computer Modelling* **44** 870-886.
- [11] Hervouet J M 2007 *Hydrodynamics of free surface flows: Modelling with the finite element method*. (England: John Willey & Sons, Ltd.) xiv-341.
- [12] Casulli V and Cheng R T 1992 Semi-implicit finite difference methods for three-dimensional shallow water flow *Int. J. for Numerical Methods in Fluids* **15** 629-648.
- [13] Arakawa A and Lamb V R 1977 Computational design of the basic dynamical processes of the UCLA general circulation model *Methods of Computational Physics* **17** 173-265.
- [14] Treguier A M, Barnier B, and De Miranda A P 2001 An eddy-permitting model of the Atlantic circulation: Evaluating open boundary condition *J. Geophys. Res. Oceans* **106** (C10) (22115-22129) 1-23.



All subject areas

All subject categories

United Kingdom

Conferences and Proceedings 2018

Only Open Access Journals

Only Scielo Journals

Only WoS Journals

Display journals with at least 0








Citable Docs. (3years)

Apply

Download data

1 - 50 of 147 < >

Title	Type	SJR	H Index	Total Docs. (2018)	Total Docs. (3years)	Total Refs. (2018)	Total Cites (3years)	Citable Docs. (3years)	Cites / Doc. (2years)	Ref. / Doc. (2018)	Country
Technical Digest - International Electron Devices Meeting	conference and proceedings	0.834	104	226	686	2867	1615	680	2.67	12.69	
Safety and Reliability of Complex Engineered Systems - Proceedings of the 25th European Safety and Reliability Conference, ESREL 2015	conference and proceedings	0.715	1	0	1	0	2	1	0.00	0.00	
Proceedings of the National Conference on Artificial Intelligence	conference and proceedings	0.630	104	0	682	0	2208	674	0.00	0.00	
Proceedings of the Prehistoric Society	conference and proceedings	0.600	20	16	43	1646	50	39	1.35	102.88	

Title	Type	↓ SJR	H Index	Total Docs. (2018)	Total Docs. (3years)	Total Refs. (2018)	Total Cites (3years)	Citable Docs. (3years)	Cites / Doc. (2years)	Ref. / Doc. (2018)	
Geotechnical Earthquake Engineering - Geotechnique Symposium in Paris 2015	conference and proceedings	0.210	1	0	15	0	3	13	0.00	0.00	
Proceedings of the 31st Annual Association of Researchers in Construction Management Conference, ARCOM 2015	conference and proceedings	0.210	5	0	124	0	63	123	0.00	0.00	
Proceedings of the 32nd Annual ARCOM Conference, ARCOM 2016	conference and proceedings	0.205	4	0	123	0	55	122	0.45	0.00	
BHR Group - 17th International Conference on Multiphase Technology 2015	conference and proceedings	0.200	6	0	36	0	16	34	0.00	0.00	
IOP Conference Series: Materials Science and Engineering	conference and proceedings	0.192	24	15720	14668	215782	7622	14196	0.53	13.73	
IET Seminar Digest	conference and proceedings	0.188	24	27	537	466	201	505	0.09	17.26	
RINA, Royal Institution of Naval Architects - Structural Load and Fatigue on Floating Structures, Papers	conference and proceedings	0.184	1	0	7	0	2	6	0.00	0.00	



IOP Conference Series: Materials Science and Engineering

24

H Index

Country [United Kingdom](#) - [SJR Ranking of United Kingdom](#)

Subject Area and Category [Engineering](#)
[Engineering \(miscellaneous\)](#)
[Materials Science](#)
[Materials Science \(miscellaneous\)](#)

Publisher

Publication type [Conferences and Proceedings](#)

ISSN [17578981](#), [1757899X](#)

Coverage [2009-ongoing](#)

Scope The open access IOP Conference Series provides a fast, versatile and cost-effective proceedings publication service for your conference. Key publishing subject areas include: physics, materials science, environmental science, bioscience, engineering, computational science and mathematics.

- [Homepage](#)
- [How to publish in this journal](#)
- [Contact](#)
- [Join the conversation about this journal](#)

Ad closed by Google

[Stop seeing this ad](#) [Why this ad?](#)

SJR



Citations per document

