

Phylogenetic Position of North Sulawesi Tarsius sp. Based on Partial Cytochrome b Gene Sequences

by Mariana Rengkuan

Submission date: 22-Jun-2023 03:35PM (UTC+0700)

Submission ID: 2120784934

File name: OJGen_2014072316371761.pdf (1.08M)

Word count: 5032

Character count: 27340

Phylogenetic Position of North Sulawesi *Tarsius* sp. Based on Partial Cytochrome b Gene Sequences

Decky David Wemvrid Kamagi¹, Aloysius Duran Corebima², Mariana Rengkuan¹

¹Faculty of Mathematic and Natural Science, State University of Manado, Tondano, Indonesia

²Faculty of Natural Science and Mathematic, State University of Malang, Malang, Indonesia

Email: deckykamagi@yahoo.com, durancorebima@yahoo.com, ine_rengkuan@yahoo.com

Received 5 May 2014; revised 4 June 2014; accepted 3 July 2014

Copyright © 2014 by authors and Scientific Research Publishing Inc.

This work is licensed under the Creative Commons Attribution International License (CC BY).

<http://creativecommons.org/licenses/by/4.0/>



Open Access

Abstract

Cyt b gene of North Sulawesi *Tarsius* sp., *T. tumpara*, *T. sangirensis* and *T. tarsier* (*T. spectrum*) had been partially sequenced. The homologous sequence of three groups had been compared to describe the phylogenetic position among them, as well as several other species accessed from the Genbank. Total DNA extracted from the muscular tissue had been obtained through tail cut sampling using the innuPREP DNA micro kit, and amplified using a pair of universal primer, L14841 and H15149. The size of the cyt b gene sequence amplified was 307 bp long. Sequence aligned using CLUSTAL-X program and diversity analysis were done using version 5.2.2. MEGA5 program. Genetic distance had been calculated by Tamura 3 parameter method and phylogenetic tree had been built using Neighbor-Joining and Maximum Likelihood methods. Genetic distance based on cyt b gene nucleotide was found from 0 to 0.240 with an average of 0.080. The phylogenetic tree constructed by Neighbor Joining and Maximum Likelihood methods indicated that *T. tarsier*, *T. sangirensis* and *T. tumpara* were closely related with *Tarsius tarsier*-complex, and distantly related with *Cephalopachus bancanus* and *Carlito syrichta*. The genetic distance and the phylogenetic tree had been constructed on the base of partial cyt b gene sequence of *T. tarsier*, *T. sangirensis*, *T. tumpara* and 5 other tarsier species and their accession. Those results are consistent with taxonomy based on morphology and vocal acoustic form.

Keywords

Molecular Phylogeny, *Tarsius* sp., Sulawesi, Cyt b Gene, Partial Sequence

1. Introduction

The main island of Sulawesi and its surrounding islands located at Wallacea zone, possess abundant biodiversity.

How to cite this paper: Kamagi, D.D.W., Corebima, A.D. and Rengkuan, M. (2014) Phylogenetic Position of North Sulawesi *Tarsius* sp. Based on Partial Cytochrome b Gene Sequences. *Open Journal of Genetics*, 4, 332-341.
<http://dx.doi.org/10.4236/oigen.2014.44030>

In the past, Sulawesi Island did not join with any other land [1]. Isolated condition in long period of time seemed to push evolution of many species so that Sulawesi Island had a high endemism level [2]. Therefore, the main priority in the management of natural resources in Sulawesi is conserving a resource of genetic diversity, because species conserved in the Sulawesi are not found in other places [3]. Sulawesi has become “top hotspots” for biodiversity conservation [4]. Sulawesi has about 529 endemic vertebrates or approximately 1.9% of endemic vertebrates in the world [2], including 7 species of endemic monkeys [5] and 7 - 9 *Tarsius* species of *Tarsius tarsier*-complex [6]. Recently, they are threatened to distinct due to natural predators, illegal hunting, and habitat destructions by human intervention.

Tarsius taxonomy up to now remains a problem continuously debated. Originally, tarsier was a monotypic genus of *Tarsiidae* family [7]. Based on morphological characteristics, tarsier consists of two different groups, western tarsier and eastern tarsier [8]; but based on genetic analysis and vocal acoustic form, tarsier is divided into three groups, western tarsier living in great Sunda Islands (Borneo and Sumatera), eastern tarsier living in Sulawesi and Phillipine tarsiers living in southern Phillipine [6]. Nowadays, the genera of *Tarsiidae* family had been revised to be three separate genera, *Tarsius*, *Cephalopachus*, and *Carlito*, each of which is allopatrically distributed in three different biogeographic regions, Sulawesi, great Sunda Islands (Borneo and Sumatera) and Mindanao [6].

Sulawesi tarsier grouped in one group called *Tarsius tarsier*-complex, comprises of 9 species: *T. sangirensis*, *T. tumpara*, *T. wallacei*, *T. lariang*, *T. pumilus*, *T. fuscus*, *T. tarsier* (*T. spectrum*), *T. pelengensis* and *T. dentatus* [6] [9]. *Tarsius tarsier* complex is a vague taxonomic group due to consisting of closely related species, so that it is less distinct to recognize the interspecific diversity based on the morphological variations. The taxonomic status of Sulawesi tarsier, especially of low land tarsier, has been long disputed due to interspecific similarity. The low land tarsier species has no significant difference in body size or body proportion [9].

Study on genetic diversity and population biology had been carried out using mitochondrial DNA [10] [11]. Variation patterns of mtDNA can be used as species distinction as well as species investigation of those endangered species [12]. The mitochondrial DNA is often used as genetic marker for closely related interspecific and intraspecific genetic diversity study, since it evolves faster than nucleic genes so that it could give more variations to reconstruct the evolutionary history [13]. Mitochondrial DNA genes had been widely applied to estimate the phylogenetic relationship of primate [14]-[16]. These genes had also been used to restudy the phylogenetic relationship among closely related taxa [12]. The mitochondrial *cyt b* gene is known as a gene evolving faster, so it can have more variation and can be used for phylogenetic and biogeographic study [16]-[18].

Whole mitochondrial genome studies had been conducted on *T. syrichta* [19], *T. bancanus* [20], *T. wallacei* [21], *T. lariang* [22] and *T. dentatus* [23], so that these results can be used as references to study several genetic markers of encoding or noncoding genes in the mitochondria. The *cyt b* gene contain discrete character groups (base position at codon) representing the mutation rate, so that it can be used as a phylogenetic marker [24].

Partial sequencing of the cytochrome *b* gene had been used to uncover the phylogenetic position and the genetic relationship among several tarsier species and among other primates [25] [26]. The *cyt b* gene is one of the protein coding gene of the mtDNA. Its product is cytochrome *b* (*cyt b*) apoenzym identified as the central catalytic subunit of Q cycle. The *cyt b* gene of tarsier has a length of 1140 bp, known as coding region of the protein located at 14169 to 15308 mtDNA sequence, flanked by the tRNA-Glu gene and the tRNA-Thr gene [20].

Several universal oligonucleotide primers had been developed for amplifying and sequencing *cyt b* gene of different animals [27]. Partial sequence of the *cyt b* gene had been applied to uncover the genetic diversity among *T. sangirensis*, *T. tumpara* and *T. tarsier* (*T. spectrum* or Manado tarsier) and several other *Tarsius sp.* obtained from the GenBank.

2. Material and Method

2.1. Sample Collection and Treatment

Sample specimen used was muscular tissue obtained by *tail cut sampling*. It was then stored at -20°C , in alcohol of 95%. Because of difficulty of collecting samples, each species consisted only 2 sample specimens. The sampling site and the specimen treatment is shown in **Table 1**.

The data sequence of *C. bancanus*, *C. syrichta*, *T. wallacei*, *T. dentatus*, *T. dentatus* \times *lariang* and *T. lariang* had been obtained from the GenBank. Tarsier species and their accession numbers taken from GenBank are shown in **Table 2**.

Table 1. Sampling and specimen treatment.

Species	Location	Specimen treatment
<i>T. tumpara</i>	Kapeta village Southwest Siau district Sitiro Regency	<ul style="list-style-type: none"> • Wet (alcohol) 95% • Wet (formaldehyde) 20%
<i>T. sangirensis</i>	Ahapatung village South Southeast Tabukan district, Sangihe Regency	<ul style="list-style-type: none"> • Wet (alcohol) 95% • Wet (formaldehyde) 20%
<i>T. tarsier</i>	Matungkas village Dimembe district North Minahasa Regency	<ul style="list-style-type: none"> • Wet (alcohol) 95% • Wet(formaldehyde) 20%

Table 2. Tarsier species and accession numbers were taken from GenBank.

Species	Accession Number	Species	Accession Number
<i>T. wallacei</i>	HM115977.1	<i>T. lariang</i>	FJ614363.1
<i>T. wallacei</i>	HM115978.1	<i>T. lariang</i>	FJ614358.1
<i>T. wallacei</i>	HM115979.1	<i>T. lariang</i>	FJ614357.1
<i>T. wallacei</i>	HM115980.1	<i>T. lariang</i>	FJ614354.1
<i>T. wallacei</i>	HM115982.1	<i>T. lariang</i>	FJ614353.1
<i>T. wallacei</i>	HM115983.1	<i>T. lariang</i>	FJ614352.1
<i>T. wallacei</i>	HM115984.1	<i>T. dentatus</i> × <i>lariang</i>	FJ614361.1
<i>T. dentatus</i>	FJ614366.1	<i>T. dentatus</i> × <i>lariang</i>	FJ614359.1
<i>T. dentatus</i>	FJ614367.1	<i>T. dentatus</i> × <i>lariang</i>	FJ614356.1
<i>T. dentatus</i>	FJ614368.1	<i>C. bancanus</i> (<i>T. bancanus</i>)	AF348159.1
<i>T. dentatus</i>	FJ614369.1	<i>C. bancanus</i> (<i>T. bancanus</i>)	AB011077.1
<i>T. dentatus</i>	FJ614370.1	<i>C. syrichta</i> (<i>T. syrichta</i>)	AB371090.1
<i>T. dentatus</i>	FJ614371.1	<i>C. syrichta</i> (<i>T. syrichta</i>)	NC012774.1

The primer used was universal primer L14841 and H15149 [27]. The specific location of the primers, L14841 (33 bp) and H15149 (34 bp) in the *cyt b* gene region was from the 63st nucleotide sequence downstream related to the forward primer and from the 435st nucleotide sequence upstream related to the reverse primer.

2.2. DNA Extraction and Cyt b Gene Amplification

Total DNA had been extracted using InnuPREP DNA micro Kit. Purity measurement of total DNA isolated of the sample resulted in a concentration of 46 - 187 µg per gram sample with λ260/λ280 ratio.

The PCR component and condition were optimized so that the *cyt b* gene could be amplified (Table 3 and Table 4).

2.3. Cyt b Gene Sequencing

The amplification product had been sent to First BASE, Laboratories Sdn. Bhd. Selangor, Malaysia to be sequenced. The equipment used was ABI PRISM 3730xl Genetic Analyzer. Biosystem USA.

2.4. Sequence Alignment and Data Analysis

The *cyt b* gene sequence data of the North Sulawesi *Tarsius sp.* and those accessed from the GenBank had been aligned using CLUSTAL-X programme [28]. Bayesian Information Criterion (BIC) had been used to consider the best substitution pattern. The genetic distance had been analyzed using the TN 93 + G (Tamura-Nei) and T92 + I (Tamura 3-parameter) methods. The phylogenetic tree had been constructed based on *Tarsius sp.* *cyt b* gene using two different approaches, Neighbor-Joining (NJ) [29] and Maximum Likelihood (ML) method [30] where *C. bancanus* and *C. syrichta* were treated as outgroup.

Table 3. Optimization component of PCR.

PCR Component	Concentration	Volume (μL)
DNA template	-	4.0 - 5.0
ddH ₂ O	-	10 - 14
Buffer	5 X	2.5
MgCl ₂	25 mM	3 - 4
Mixture of dNTP	1 mM	0.5
Primer forward	15 - 30 pmol· μL^{-1}	0.5
Primer reverse	15 - 30 pmol· μL^{-1}	0.5
Tag DNA polymerase	4 - 6 U· μL^{-1}	0.3

Table 4. Condition optimization of PCR.

No. Cycles	Duration (min.)	Temperature °C	Phase
35	3	94	Initial denaturation
	1	94	Denaturation
	1	55	Annealing
	1	72	Elongation
	10	72	Post-elongation

Note: Before sequencing, the PCR product was purified and electrophorized in agarosa gel 1.5%.

33

3. Results

3.1. Extraction and Amplification of cyt b Gene

Total DNA of six samples of North Sulawesi *Tarsius sp.* had been isolated and amplified. The results of electrophoresis on 1.5% agarose gel showed that cyt b gene amplified was at about 400 bp (Figure 1).

3.2. Sequence Characteristic

Multiple alignment of cyt b gene sequence of 307 bp long derived from *T. sangirensis*, *T. tarsier*, *T. tumpara* and those from homologous cyt b gene sequence of several tarsier species taken from *GenBank* indicates that invariable sites character as much as 72.97%, informative parsimony sites as much as 27.03% and variable sites as much as 27.03% (Table 5).

Nucleotide composition of the partial gene cyt b sequence of each tarsier species exhibits variations indicated by frequency difference of each bases among species. Average base frequency of T = 32.80%, C = 22.67%, A = 28.63% dan G = 15.90%. Analysis of several parameters of partial cyt b gene sequence (Table 6) found that nucleotide diversity (Pi) = 0.0698, total mutation = 97, ts/tv ratio (R) = 4.978 and ts/tv (k) ratio between purine bases = 5.253 and between pyrimidine bases = 13.418, respectively.

3.3. Genetic Distance

Genetic distance measured using the Tamura 3 parameters indicate that the value varies from 0 to 0.240 (complete matrix data are not included). The genetic distance of 0 is shown by sample pairing of the same species. Genetic distance is shown by pairing of *C. bancanus* and other species, i.d. from 0.181 to 0.240, as well as pairing of *C. syrichta* and other tarsier species, with values from 0.181 to 0.200. Pairing among Sulawesi *Tarsius sp.* have the values 0 to 0.095. Overall mean distance is 0.080. These data indicate that those Sulawesi tarsiers are classified as closely related taxa and relatively distant related to the Borneo tarsier *C. bancanus* as well as to the Philippine tarsier *C. syrichta*.

3.4. Phylogenetic Tree

Figure 2 and Figure 3 are phylogenetic trees based on nucleotides of partial cyt b gene constructed by method

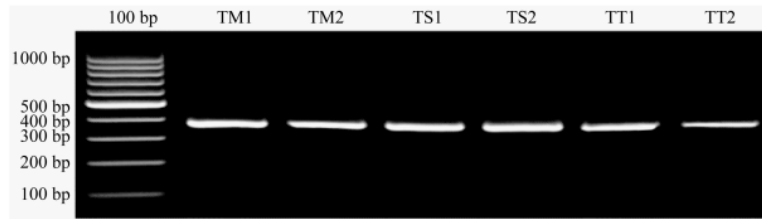


Figure 1. Cyt b gene amplification of North Sulawesi *Tarsius sp.* sample on 1.5% agarose gel. Lanes: 100 bp as a marker, TM1 and TM2 = *T. tarsier*, TS1 and TS2 = *T. sangirensis*, TT1 and TT2 = *T. tumpara*.

Table 5. Summary of cyt b gene sequence diversity.

Analysis	Amount	%
Tested character	307	-
Invariable sites	224	72.97
Variable sites	83	27.03
Informative Parsimony sites	83	27.03
Non-informative Parsimony sites	224	72.97

Table 6. Analysis results of cyt b gene partial sequencing.

Parameter	Position at Codon			Total
	First	Second	Third	
Thyrosine frequency	29.9%	42.2%	26.7%	306
Cytosine frequency	17.6%	21.6%	28.1%	306
Adenine frequency	25.8%	17.6%	42.7%	306
Guanine frequency	26.7%	18.6%	2.5%	306
Frequency of invariable sites		73%		
Frequency of parsimony informative sites		27%		
Nucleotide diversity (Pi)		0.069833		
Number of haplotypes		9		
Total number of mutations		97		
Polymorphic sites		83		
ts/tv ratio (k)		Purine = 5.253, Pyrimidine = 13.418		
ts/tv ratio (R)		4.978		
Gamma discrete distribution (Tamura-Nei Model)		0.1882		
Mean of evolutionary rate		0.00, 0.01, 0.10, 0.63, dan 4.26 substitution per site		

Note: Analysis of base frequency only involved 306 bp, adjusted to the reading frame encoding amino acids, started from second nucleotide of each sequence amplified.

13

based on distance of Neighbor-Joining (NJ) and Maximum Likelihood (ML). Both NJ and ML phylogenetic trees constructed based on the nucleotide sequences showed same tree topologies. Both NJ and ML phylogenetic tree put North Sulawesi tarsier, *T. sangirensis*, *T. tumpara*, and *T. tarsier* relatively at the same position at the tree.

In NJ phylogenetic tree, both *T. sangirensis* and *T. tumpara* form a monophyletic clade and separate from the others *Tarsius tarsier*-complex (99% BR). On the other hand, *T. tarsier* forms a monophyletic clade and occupies position in *Tarsius tarsier*-complex clade (94% BR). In ML phylogenetic tree both *T. sangirensis*, *T. tumpara* also form a clade separated from the other *T. tarsier*-complex (98% BR). *T. tarsier* is located on *Tarsius tarsier*-complex clade. In general, both the NJ and ML trees showed similarities in grouping populations, in which *T. sangirensis*, *T. tumpara*, *T. tarsier* and other species are clustered in a larger clade called *Tarsier tarsier*-complex.

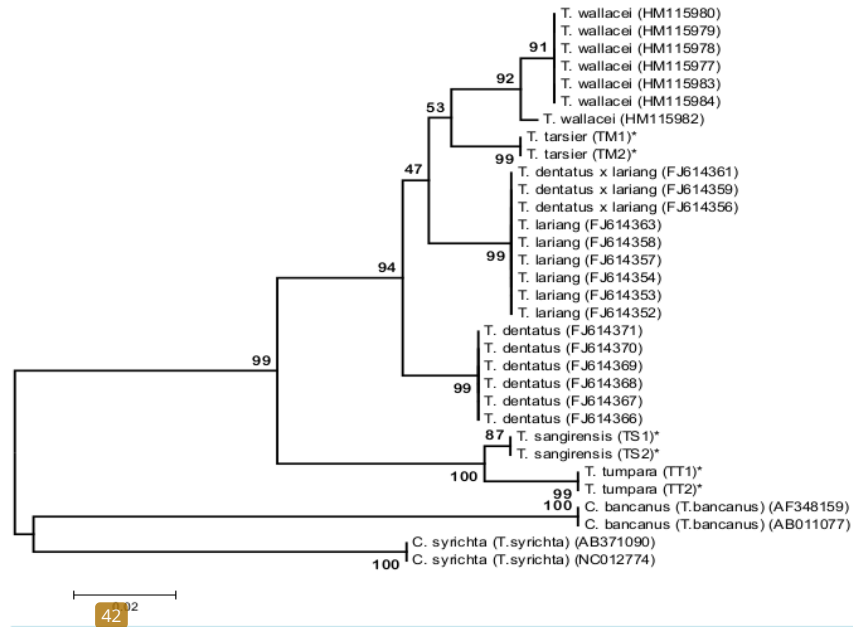


Figure 2. Phylogenetic tree based on nucleotide sequences had been constructed by Neighbor-Joining method. NJ-1000 BR, substitution models: Tamura-Nei model, (TN93 + G). Numbers at the branches are bootstrap values. Note: species marked with an asterisk are species sampled.

4. Discussion

Prior classification of tarsier consisted of *C. bancanus* (*T. bancanus*), *C. syrigha* (*T. syrigha*) and *T. tarsier* (*T. spectrum*) [7]. These three species are closely related [31]. Recently, genera and species of the *Tarsiidae* family originally known as a monotypic genus, right now this family consists of three genera [9]. These three genera are *Chepalopachus*, inhabiting the biogeographic region of Borneo and Sumatra, *Carlito* known as the Philippine tarsier and *Tarsius* known as east tarsier or Sulawesi tarsier or *Tarsius tarsier*-complex. Striking morphological characteristic differences of all three genera are mainly in the form of teeth, long legs and arms, tail end hair (tail-tuft) and mammary gland. Most *Tarsius* forms social group and has a duet song; *Carlito* does not form social groups in the wild but could socialize in captivity, as well as has no duet song, and *Chepalopachus* does not form social groups in the wild, as well as can not socialize even in captivity and has no duet song [9].

Some species of *Tarsius tarsier* complex had separated from the other Sulawesi tarsier, because these species inhabit separate biogeographic region of Sulawesi mainland (See Figure 4). Both species of *T. sangirensis* and *T. tumpara* inhabit the archipelago biogeographic region known as the Sangihe archipelago. *T. tumpara* inhabits Siau island but *T. sangirensis* inhabits Sangihe island. Two islands are located at a distance of ± 60 km and restricted by the deep sea. *T. sangirensis* and *T. tumpara* are not allied with the Philippine tarsier *C. syrigha*, although their biogeographic regions are close to each other. In other hand *C. syrigha* is allied with *C. bancanus*, although their biogeographic regions are relatively far apart. *T. tumpara* is subtly different from *T. sangirensis*, but both are significantly different from other tarsier of the *Tarsius tarsier* complex. Morphological features related to rare tail hair of *T. sangirensis* and *T. tumpara* resemble the features of Philippine tarsier *C. syrigha*.

Related to the phylogenetic position of *T. sangirensis*, *T. tumpara* and *T. tarsier* this research result supports the hypothesis that *T. sangirensis*, *T. tumpara* are the sister taxon and allied with *Tarsius tarsier*-complex [32]. Grouping *T. sangirensis*, *T. tumpara* together and grouping of *T. tarsier* to the large clusters of *T. wallacei*, *T. dentatus* and *T. larium* are in accordance with distribution of Sulawesi tarsiers.

Related to the distribution of Sulawesi tarsiers, there were some distribution forms like Manado form, Libou form, Sejoli form, Tinombo form, Kamamora form, and Togian form [2]. The distribution of Sulawesi tarsiers had occurred in part by events of Pleistocene vicariance and partly had been influenced by tectonic activities

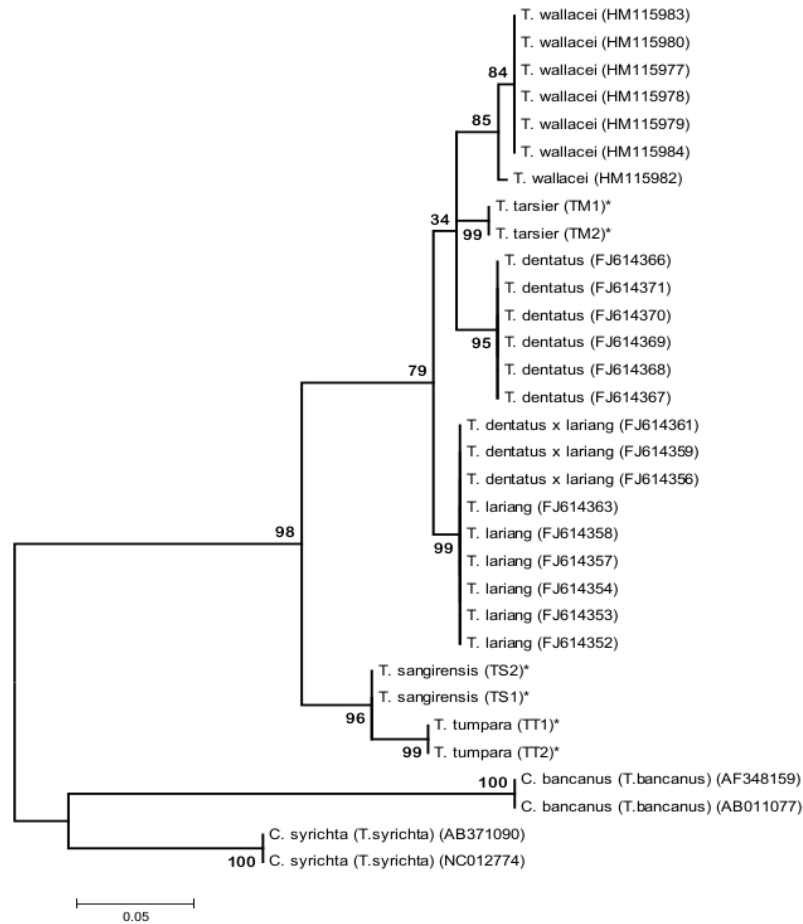


Figure 3. Phylogenetic tree based on nucleotide sequence had been reconstructed by Maximum Likelihood (ML), Bootstrap 1000. Substitution Model: Tamura 3-parameter model (T92 + I). Branch Swap Filter: Very Strong. Numbers at the branches are bootstrap values. Note: species marked with an asterisk are species sampled.

occured before the Pleistocene era [3].

Distribution of Sulawesi tarsier is closely related to that of vocalization forms (duet song). Distribution of vocalization forms of tarsiers of the northern and central parts of Sulawesi are in accordance with each species locality [33]. There was a presupposition saying that the vocal forms of tarsiers were different among the tarsier population in the south and southeast Sulawesi, as well as in offshore islands of Selayar, Buton and Kabane region [34]. The striking difference is related to their acoustic features; tarsier populations of south, southeast, and offshore islands of Sulawesi are classified as different species. Tarsier species having different acoustic duet song features are *Tarsius diana* (*T. dentatus*), *T. lariang*, Togian tarsier, *T. pelengensis*.

This research result reinforces the fact that *T. tarsier*, *T. sangirensis* and *T. tumpara* are three distinctive species genetically, bioacoustically, morphologically as well as they have different distribution. This explanation is consistent with the hypothesis that speciation of tarsiers had occurred as a result of the spread of proto-Sulawesi island, followed by various subsequent fragmentations [23]. The phylogenetic positions of the North Sulawesi tarsiers uncovered by this research are based only on 307 nt sequence of the *cyt b* gene, but these results are in accordance with the several publications reported [9] [33] [34]. To obtain more reliable results, the results of this

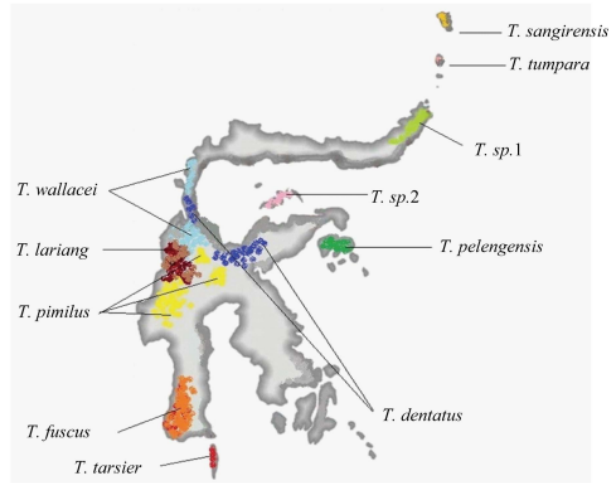


Figure 4. Distribution Map of Tarsier Found in Sulawesi. This figure modified from Groves and Shekelle, 2010.

study need to be examined again by *cyt b* gene sequence analysis as a whole, or to be examined using other applications of genetic markers.

5 Conclusions

Based on the *cyt b* gene partial sequence of North Sulawesi *Tarsius sp.*, this result of research uncovers that *T. tarsier*, *T. sangirensis* and *T. tumpara* are closely related to *Tarsius tarsier*—complex, and relatively open related to *C. bancanus* and *C. syrichta*. This was supported by the genetic distance of each species uncovered at NJ phylogenetic tree as well as at ML phylogenetic tree.

The positions of North Sulawesi tarsiers at the phylogenetic trees constructed based on the partial sequence of *cyt b* gene are in accordance with the classification based on morphology, distribution according to biogeographic region, as well as on distribution according to vocalization forms.

Acknowledgements

Great appreciation is given to Mr. S. Sahambangung (Talawit, Siau Sitaro), Mr. Utu (Kapeta, Siau Sitaro), Mr. Icon (Ahapatung, Sangihe) and Mr. D. Rotty (Matungkas, North Minahasa), who had helped to collect samples. This appreciation is also given to Mr. B. Kolondam who had helped the laboratory work.

References

- [1] Hall, R. (2001) Cenezoic Reconstructions of SE Asia and the SW Pacific: Changing Patterns of Land and Sea. In: Metcal, I., Smith, J.M.B., Morwood, M. and Davidson, I.D., Eds., *Faunal and Floral migration in SE Asia-Australia*, A. Balkema (Swets and Zietlinger Publishers), Lisse, 35-36.
- [2] Shekelle, M. and Leksono, S.M. (2004) Strategi Konservasi di Pulau Sulawesi dengan Menggunakan Tarsius Sebagai Ship Spesies. *Biota*, **IX**, 1-10.
- [3] Wilson, K.A., McBride, M.F., Bodel, M. and Possingham, H.P. (2006) Prioritizing Global Conservation Efforts. *Nature*, **440**, 337-340. <http://dx.doi.org/10.1038/nature04366>
- [4] Myers, N., Mittermeier, R.A. and Mittermeier, C.G. (2000) Biodiversity Hotspots for Conservation Priorities. *Nature*, **403**, 853-858. <http://dx.doi.org/10.1038/35002501>
- [5] Evans, B.J., Supriatna, J., Andayani, J.N., Setiadi, M.I., Cannatella, D.C. and Melnick, D.J. (2003) Monkeys and Toads: fine Areas of Endemism on Sulawesi. *Evolution*, **57**, 1436-1443. <http://dx.doi.org/10.1111/j.0014-3820.2003.tb00350.x>
- [6] Hill, W.C.O. (1955) *Primates: Comparative Anatomy and Taxonomy*. II. Haplorhini: Tarsiidea. Edinburgh University

- Press, Edinburgh.
- [7] Brandon-Jones, D., Eudey, A.A., Geissmann, T., Groves, C.P., Melnick, D.J., Morales, J.C., Shekelle, M. and Stewart, C.B. (2004) Asian Primate Classification. *International Journal of Primatology*, **25**, 97-164. <http://dx.doi.org/10.1023/B:IJOP.0000014647.18720.32>
 - [8] Grove, S.L. and Shekelle, M. (2010) Genera and Species of *Tarsiidae*. *International Journal of Primatology*, **31**, 1071-1082. <http://dx.doi.org/10.1007/s10764-010-9443-1>
 - [9] Shekelle, M., Meier, R., Wahyu, I., Wirdateti and Ting, N. (2010) Molecular Phylogenetics and Chronometrics of Tarsiidae Based on 12S mtDNA Haplotypes: Evidence for Miocene Origins of Crown Tarsiers and Numerous Species within the Sulawesi Clade. *International Journal of Primatology*, **31**, 1083-1106. <http://dx.doi.org/10.1007/s10764-010-9457-8>
 - [10] Avise, J.C., Lansman, R.A. and Shade, R.O. (1979) Use Endonuclease to Measure Mitochondrial DNA Sequence Heterogeneity in Natural Population. I. Population Structure and Evolution in Genus *Peromyscus*. *Genetics*, **92**, 279-295.
 - [11] Brown, W.M., Prager, E.M., Wang, A. and Wilson, A.C. (1982) Mitochondrial DNA Sequences of Primates: Temporal Mode of Evolution. *Journal of Molecular Evolution*, **18**, 225-239. <http://dx.doi.org/10.1007/BF01734101>
 - [12] Moritz, C., Dowling, T.E. and Brown, W.M. (1987) Evolution of Animal Mitochondrial DNA. *Annual Review of Ecology and Systematics*, **18**, 269-292. <http://dx.doi.org/10.1146/annurev.es.18.110187.001413>
 - [13] Zubaidah, S. (2011) Integrasi Pendekatan Morfologi dan Molekuler DNA (Deoksibonucleic Acid) Dalam Taksonomi. Pidato Pengukuhan Guru Besar Dalam Bidang Genetika Pada FMIPA, Universitas Negeri Malang.
 - [14] Master, J.C., Boniotto, M., Crovella, S., Roos, C., Pozzi, L. and Delperio, M. (2007) Phylogenetic Relationships among the Lorisoidea as Indicated by Craniocental Morphology and Mitochondrial Sequence Data. *American Journal of Primatology*, **69**, 6-15. <http://dx.doi.org/10.1002/ajp.20322>
 - [15] Randi, E. (1996) A Mitochondrial Cytochrome Phylogeny of the *Alectoris partridges*. *Journal of Molecular Phylogenetics and Evolution*, **6**, 34-41.
 - [16] Roos, C., Nadler, T. and Walter, L. (2008) Mitochondrial Phylogeny, Taxonomy and Biogeography of Silver Langur Species Group (*Trachypithecus cristatus*). *Molecular Phylogenetics and Evolution*, **47**, 629-636. <http://dx.doi.org/10.1016/j.ympev.2008.03.006>
 - [17] Lim, L.S., Ang, K.C., Mahani, M.C., Shahrom, A.W. and Md-Zain, B.M. (2010) Mitochondrial DNA Polymorphism and Phylogenetic Relationships of Proto Malays in Peninsular Malaysia. *Journal of Biological Sciences*, **10**, 71-83. <http://dx.doi.org/10.3923/jbs.2010.71.83>
 - [18] Karanth, K.P., Lalji, S., Collura, R.V. and Beth, S.C. (2008) Molecular Phylogeny and Biogeography of Langurs and of Monkey of South Asia. *Molecular Phylogenetics and Evolution*, **46**, 683-694. <http://dx.doi.org/10.1016/j.ympev.2007.11.026>
 - [19] Matsui, A., Rakotondraparany, F., Munechika, I., Hasegawa, M. and Horai, S. (2009) Molecular Phylogeny and Evolution of Prosimians Based on Complete Sequences of Mitochondrial DNAs. *Gene*, **441**, 53-66.
 - [20] Schmitz, J., Ohme, M. and Zischler, H. (2002) The Complete Mitochondrial Sequence of *Tarsius bancanus*: Evidence for an Extensive Nucleotide Compositional Plasticity of Primate Mitochondrial DNA. *Molecular Biology and Evolution*, **19**, 544-553. <http://dx.doi.org/10.1093/oxfordjournals.molbev.a004110>
 - [21] Merker, S., Driller, C., Dahruddin, H., Wirdateti, Sinaga, W., Farajallah, D.P. and Shekelle, M. (2010) *Tarsius wallacei*: A New Tarsier Species from Central Sulawesi Occupies a Discontinuous Range. *International Journal of Primatology*, **31**, 1107-1122. <http://dx.doi.org/10.1007/s10764-010-9452-0>
 - [22] Driller, C., Perwitasari-Farajallah, D., Zischler, H. and Merker, S. (2009) The Social System of Lariang Tarsiers (*Tarsius lariang*) as Revealed by Genetic Analysis. *International Journal of Primatology*, **30**, 267-281. <http://dx.doi.org/10.1007/s10764-009-9341-6>
 - [23] Merker, S., Driller, C., Perwitasari-Farajallah, D., Pamungkas, J. and Zischler, H. (2009) Elucidating Geological and Biological Processes Underlying the Diversification of Sulawesi Tarsiers. *Proceedings of the National Academy of Sciences of the United States of America*, **106**, 8459-8464. <http://dx.doi.org/10.1073/pnas.0900319106>
 - [24] Farias, I.P., Orti, G., Sampaio, I., Schneider, H. and Meyer, A. (2001) The Cytochrome b Gene as a Phylogenetic Marker: The Limits of Resolution for Analyzing Relationships among Cichlid Fishes. *Journal of Molecular Evolution*, **52**, 89-103. <http://dx.doi.org/10.1007/s002390010197> PMID:11479680
 - [25] Widayanti, R., Solihin, D.D., Sajuthi, D. and Dyah Perwitasari, R.R. (2004) Kajian Penanda Genetik Gen Cytochrome b pada *Tarsius sp.* *Jurnal Sain Veteriner*, **24**, 1-8.
 - [26] Md-Zain, B.M., Lee, S.J., Lakim, M., Ampeng, A. and Mahani, M.C. (2010) Phylogenetic Position of *Tarsius bancanus* Based on Partial Cytochrome b DNA Sequences. *Journal of Biological Science*, **10**, 348-354. <http://dx.doi.org/10.3923/jbs.2010.348.354>

- [27] Kocher, T.D., Thomas, W.K., Meyer, A., Edwards, S.V., Paabo, S., Villablanca, F.X. and Wilson, A.C. (1989) Dynamics of Mitochondrial DNA Evolution in Animals: Amplification and Sequencing with Conserved Primers. *Proceedings of the National Academy of Sciences of the United States of America*, **86**, 6196-6200. <http://dx.doi.org/10.1073/pnas.86.16.6196>
- [28] Thompson, J.D., Gibson, T.J., Plewniak, F., Jeanmouh, F. and Higgins, D.G. (1997) The Clustal-X Window Interface: Flexible Strategies for Multiple Sequences Alignment Aided by Quality Analysis Tools. *Nucleic Acids Research*, **25**, 4876-4882. <http://dx.doi.org/10.1093/nar/25.24.4876>
- [29] Saitou, N. and Nei, M. (1987) The Neighbor-Joining Method: A New Method for Reconstructing Phylogenetic Trees. *Molecular Biology and Evolution*, **4**, 406-425.
- [30] Felsenstein, J. (1981) Evolutionary Trees from dna Sequences: A Maximum Likelihood Approach. *Journal of Molecular Evolution*, **17**, 368-376. <http://dx.doi.org/10.1007/BF01734359>
- [31] Musser, G.G. and Dagosto, M. (1987) The Identity of *Tarsius Pumilus*, a Pygmy Species Endemic to the Montane Mossy Forests of Central Sulawesi. *American Museum Novitates*, **2867**, 1-53.
- [32] Shekelle, M., Groves, C., Merker, S. and Supriatna, J. (2008) *Tarsius tumpara*: A New Tarsier Species from Siau Island, North Sulawesi. *Primata Conservation*, **23**, 55-64. <http://dx.doi.org/10.1896/052.023.0106>
- [33] Shekelle, M. (2008) Distribution of Tarsiers Acoustic Forms, North and Central Sulawesi: With Notes on The Primary Taxonomy of Sulawesi's Tarsiers. Primates of The Oriental Night, CBCS-UI, Faculty of Mathematics and Science, University of Indonesia, Depok, 35-50.
- [34] Burton, J.A. and Nietsch, A. (2010) Geographical Variation in Duet Songs of Sulawesi Tarsiers: Evidence for New Cryptic Species in South and Southeast Sulawesi. *International Journal of Primatology*, Springer Science + Business Media, LLC 2010.

Scientific Research Publishing (SCIRP) is one of the largest Open Access journal publishers. It is currently publishing more than 200 open access, online, peer-reviewed journals covering a wide range of academic disciplines. SCIRP serves the worldwide academic communities and contributes to the progress and application of science with its publication.

Other selected journals from SCIRP are listed as below. Submit your manuscript to us via either submit@scirp.org or [Online Submission Portal](#).



Phylogenetic Position of North Sulawesi Tarsius sp. Based on Partial Cytochrome b Gene Sequences

ORIGINALITY REPORT

23%

SIMILARITY INDEX

12%

INTERNET SOURCES

20%

PUBLICATIONS

15%

STUDENT PAPERS

PRIMARY SOURCES

- | | | |
|---|---|----|
| 1 | www.columbia.edu
Internet Source | 1% |
| 2 | besjournals.onlinelibrary.wiley.com
Internet Source | 1% |
| 3 | jurnal.untad.ac.id
Internet Source | 1% |
| 4 | G. E. LUYO-ACERO, H. UEZATO, M. OSHIRO, K. TAKEI, K. KARIYA, K. KATAKURA, E. GOMEZ-LANDIRES, Y. HASHIGUCHI, S. NONAKA. " Sequence variation of the Cytochrome gene of various human infecting members of the genus and their phylogeny ", Parasitology, 2004
Publication | 1% |
| 5 | Xia Wan, Liang Zhang, Samuli Lehtonen, Hanna Tuomisto, Da-Wei Zhang, Xin-Fen Gao, Li-Bing Zhang. "Five long-distance dispersals shaped the major intercontinental disjunctions in Tectariaceae s.l. (Polypodiales, | 1% |

Polypodiopsida)", Molecular Phylogenetics and Evolution, 2023

Publication

6	Submitted to University of Philadelphia - Jordan Student Paper	1 %
7	Tesla A. Monson, Leslea J. Hlusko. "Breaking the rules: Phylogeny, not life history, explains dental eruption sequence in primates", American Journal of Physical Anthropology, 2018 Publication	1 %
8	old.oalib.com Internet Source	1 %
9	Submitted to Hadlow College, Kent Student Paper	1 %
10	Submitted to Wawasan Open University Student Paper	1 %
11	sid.ir Internet Source	1 %
12	Submitted to Montana State University, Bozeman Student Paper	1 %
13	Serrato Díaz Alejandra. "Coevolucion a nivel macroevolutivo entre Ficus (Moraceae) y sus	1 %

polinizadoras, las avispas Agaonidae",
TESIUNAM, 2007

Publication

14

Vincent Nijman. "No longer based on photographs alone: refuting the validity of golden-crowned langur *Presbytis johnaspinalli* Nardelli 2015 (Mammalia, Primates, Cercopithecidae)", *Zoosystematics and Evolution*, 2021

Publication

15

www.cambridge.org

Internet Source

16

Jesualdo A. Fuentes-González, Emília P. Martins. "Using phylogenetic comparative methods to gain insight into the evolution of social complexity", *Behavioral Ecology and Sociobiology*, 2019

Publication

17

Nanik Hidayatik, TutyLaswardi Yusuf, Muhammad Agil, Entang Iskandar, Dondin Sajuthi. "Sexual Behaviour of the Spectral Tarsier (*Tarsius spectrum*) in Captivity", *Folia Primatologica*, 2018

Publication

18

Submitted to Queen Mary and Westfield College

Student Paper

1 %

1 %

1 %

1 %

1 %

19 Sohrab Rezvani, Amin Eimanifar, Reza Aghili, Faramarz Laloei. " PCR-RFLP analysis of mitochondrial DNA for identification of populations on the southern coast of the Caspian Sea, Iran ", Journal of the Marine Biological Association of the United Kingdom, 2006
Publication

20 Submitted to Liverpool John Moores University
Student Paper

21 Submitted to University of Surrey
Student Paper

22 Raaum, Ryan L.. "Molecular Evidence of Primate Origins and Evolution Primate evolution", Handbook of Paleoanthropology, 2013.
Publication

23 carleton.ca
Internet Source

24 Dietmar Zinner. "The strange blood: Natural hybridization in primates", Evolutionary Anthropology Issues News and Reviews, 05/2011
Publication

25 digitalcommons.wustl.edu
Internet Source

26	journal.uinsgd.ac.id Internet Source	<1 %
27	www.neliti.com Internet Source	<1 %
28	www.perspectecolconserv.com Internet Source	<1 %
29	Submitted to Georgia College & State University Student Paper	<1 %
30	www.scielo.br Internet Source	<1 %
31	Submitted to Trident Technical College Student Paper	<1 %
32	Submitted to Bolton Institute of Higher Education Student Paper	<1 %
33	Mei-Chen Tseng, Chuen-Tan Jean, Peter J., Yin-Huei Hung. "Chapter 12 Interspecific and Intraspecific Genetic Diversity of Thunnus Species", IntechOpen, 2012 Publication	<1 %
34	mapress.com Internet Source	<1 %
35	Grasso, V.. "Characterization of the cytochrome b gene fragment of Puccinia	<1 %

species responsible for the binding site of QoI fungicides", Pesticide Biochemistry and Physiology, 200602

Publication

36

frdc.com.au

Internet Source

<1 %

37

Maya Damyanova, Dessislava Todorova, Iskren Sergiev. "Polyamine Alterations in Isolated Zucchini Cotyledons Grown in Presence of Cytokinins and Cu²⁺", American Journal of Plant Sciences, 2014

Publication

<1 %

38

Corebima, A.D., and M. Rengkuan. "The Detection of Superior PO Cattle (Ongole Cattle Descendant) Based on The Growth Hormone Gene Sequence", APCBEE Procedia, 2012.

Publication

<1 %

39

Submitted to EDMC

Student Paper

<1 %

40

H. Sakata, M. Taira, M. Kusunoki, A. Murata, Y. Tanaka. "The TINS Lecture The parietal association cortex in depth perception and visual control of hand action", Trends in Neurosciences, 1997

Publication

<1 %

41

Submitted to Indian Institute of Technology
Guwahati

Student Paper

<1 %

42

www.openveterinaryjournal.com

Internet Source

<1 %

43

Cifuentes Ruiz Paulina. "Análisis filogenético de la tribu helopini en américa (coleoptera: tenebrionidae) y la revisión taxonómica de nautes pascoe, 1886", TESIUNAM, 2015

Publication

<1 %

44

Myron Shekelle, Agus Salim. "An acute conservation threat to two tarsier species in the Sangihe Island chain, North Sulawesi, Indonesia", Oryx, 2009

Publication

<1 %

45

rajpub.com

Internet Source

<1 %

46

Abdul Hameed Baloch, Shakeela Daud, Jameela Shuja, Adeel Ahmad et al.
"Metaplastic Carcinoma of the Breast: A Clinical Study of 7 Cases from Balochistan",
Advances in Breast Cancer Research, 2014

Publication

<1 %

47

Submitted to Alexandru Ioan Cuza University
of Iasi

Student Paper

<1 %

48

HÃ©ne AgoguÃ©, Emilio O. Casamayor, Muriel Bourrain, Ingrid Obernosterer et al. "A survey on bacteria inhabiting the sea surface microlayer of coastal ecosystems", FEMS Microbiology Ecology, 2005

Publication

<1 %

49

Josep Marmi. "Phylogeny, evolutionary history and taxonomy of the Mustelidae based on sequences of the cytochrome b gene and a complex repetitive flanking region", Zoologica Scripta, 11/2004

Publication

<1 %

50

S.M.N. Romaino, Z.A. Fazly-Ann, S.S. Loo, M.M. Hafiz et al. "Species identification of Malayan Gaur, Kedah-Kelantan and Bali cattle using polymerase chain reaction-restricted fragment length polymorphism", Genetics and Molecular Research, 2014

Publication

<1 %

51

F. Foulet, F. Botterel, P. Buffet, G. Morizot, D. Rivollet, M. Deniau, F. Pratlong, J.-M. Costa, S. Bretagne. "Detection and Identification of Leishmania Species from Clinical Specimens by Using a Real-Time PCR Assay and Sequencing of the Cytochrome b Gene", Journal of Clinical Microbiology, 2007

Publication

<1 %

52

Fitzpatrick, Margaret A., Egon A. Ozer, and Alan R. Hauser. "Utility of Whole-Genome Sequencing in Characterizing Acinetobacter Epidemiology and Analyzing Hospital Outbreaks", *Journal of Clinical Microbiology*, 2016.

Publication

<1 %

53

Kraaij, Tineke, Richard M. Cowling, and Brian W. Van Wilgen. "Fire regimes in eastern coastal fynbos: Imperatives and thresholds in managing for diversity", *Koedoe - African Protected Area Conservation and Science*, 2013.

Publication

<1 %

Exclude quotes Off

Exclude matches < 2 words

Exclude bibliography Off