

# Analytic Hierarchy Process (AHP) Methods For Evaluation of Teacher Quality

*by Irene Tangkawarouw*

---

**Submission date:** 14-Jun-2023 10:20AM (UTC+0700)

**Submission ID:** 2115669273

**File name:** 55910941\_1.pdf (2.75M)

**Word count:** 3885

**Character count:** 17663

# Analytic Hierarchy Process (AHP) Methods For Evaluation of Teacher Quality

Julyeta P.A. Runtuwene<sup>1</sup>  
Department of Informatics  
Universitas Negeri Manado  
Manado, Indonesia  
<sup>1</sup>julyeta.par@unima.ac.id

<sup>11</sup>rene R.H.T. Tangkawarow<sup>2</sup>, Mario T. Parinsi<sup>3</sup>  
Department of Education in Information Technology and  
Communication  
Universitas Negeri Manado  
Manado, Indonesia  
<sup>2</sup>irene.tangkawarow@unima.ac.id,  
<sup>3</sup>marioparinsi@unima.ac.id

**Abstract**— Generally, if there are several complex criteria, constraints will occur in decision making. The decision making process faces the priority of several alternatives. Sometimes, decision making occurs using mere subjective values. This is not supposed to happen in determining teacher's quality. Based on Indonesian Law No. 14 of 2005 concerning Teachers and Lecturers, it is stated that the intended teacher competencies are pedagogic competence, personality competence, social competence, and professional competence. These four criteria are the basic criteria for determining teacher's quality. The Analytic Hierarchy Process (AHP) method is one of the methods in the Multi Criteria Decision Method (MCDM) which can provide solutions to support decision makers to determine the quality of teachers to be assessed. The results of this study are in the form of an application to determine the quality of teachers based on the ratings assessed from the four criteria with 19 sub criteria. Based on the experimental results, the criteria used for consistency of weighted priority level analysis were found to be consistent and the best quality of teacher based on all available alternatives. So the results of alternative rankings can be used as basic guidelines to help decision making.

**Keywords**— Decision support, teacher competencies, MCDM, AHP, teacher quality.

## I. INTRODUCTION

Teachers become one of determiners of Education Quality. In Act No.14 year 2005 about teachers and lecturers and the Regulation of State Minister for Utilization of State Apparatus and Bureaucracy Reformation No. 16 year 2009 about teacher's functional position and its credit number, teachers have to perform 4 competences namely: pedagogic, personality, social and professional competence and a professional teacher has to conduct Continuing Professional Development (CPD). CPD means self-development, scientific publication and innovative works.

This study is meant to overcome problems in decision making related to the continuing of teacher's quality. The background of problem in this study is based on the national issue nowadays that professional teachers have orientation not on the quality of their profession but only on remuneration, instead; there is a difficulty to analyze data to assist decision making process of professional teacher's

quality/; there is also a difficulty to make a data report either in the aspect of quality, accuracy or time, therefore it is hard to determine reward and punishment for professional teachers. Reference [1] in his research, divides categories of continuing development assessment for professionalism of certified teachers with the following categories: high, average and low. A conducted research for teachers of SMK Techno in the entire Malang Raya, there is lack of interest for the certified teachers to upgrade or improve their competence of professionalism. Reference [2] in his research states that Indonesian Government effort will be useless when the performance of certified teachers (professional teachers) is not better than that before being certified. This happens when after being certified their performance decline because they no longer feel being assessed and given no sanction. This is the reason why evaluation needs to be done for certified teachers sustainably.

Criteria that will be used in this study are taken from [3] research in which certified teachers have to fulfill several criteria that can be seen from table I as follows:

TABLE I. CRITERIA AND SUB CRITERIA OF PROFESSIONAL TEACHERS

No	Criteria	Sub Criteria	Explanation
1.	Pedagogic (Pe)	Understanding learners (Pe1) Designing RPP (Pe2) Performing RPP (Pe3) Evaluating learning outcome (Pe4) Developing learners (Pe5)	Reflected from the level of understanding of students, design and execution of learning, evaluation of learning outcome and development of students to actualize the various potentials owned
2.	Personality (K)	Steady personality, stable, mature, skillful, authoritative (K1) Become an example for his learners (K2) Become an example for the people (K3) Has noble personality (K4)	Reflected from personal ability such as steady personality, stable, mature, skillful, authoritative, become an example for his learners and people and has noble personality.
3.	Social (S)	Able to communicate and associate	Reflected from teacher's ability to

No	Criteria	Sub Criteria	Explanation
		effectively with learners (S1) Able to communicate and associate effectively with the same teachers (S2) Able to communicate and associate effectively with parents/guardians of learners (S3) Able to communicate and associate effectively with surrounding people (S4)	communicate and mingle with learners, teachers, educators, parents/guardians and people effectively
4.	Professional (Pr)	Mastering the learning material broadly (Pr1) Mastering the curriculum material and knowledge substance comprising the material (Pr2) Mastering the structure and methodology of his knowledge (Pr3)	Reflected from the mastery of learning material broadly and deeply covering curriculum of subject materials at school and the substance of knowledge comprising the material and the mastery of structure and methodology of his knowledge.
5.	Innovation development (Pi)	Availability of scientific publication (Pi1) Created innovative works (Pi2)	Reflected from the ability in innovation/developing innovation of teacher's knowledge applied in teaching and learning activity.
6.	Utility of technology (Pt)	Utility of information technology in teaching and learning activity (Pt1)	Reflected from the ability to use/apply technology in teaching and learning activity.

**II. PROPOSED METHOD**

**A. Multi Criteria Decision Making (MCDM)**

MCDM method is developed to support decision making process [4][5]. MCDM is used a lot as a tool to solve problems for performance-type, resource management, policy and strategy of a company, public policy, political strategy and planning [4-12]. Decision supporter plays a role to give support in decision making and not replacing the role of decision maker. In other words, decision supporter exists to improve efficiency in decision making [9].

**B. Analytic Hierarchy Process (AHP)**

One of methods in MCDM is Analytic Hierarchy Process (AHP). This method is developed by Thomas. L Saaty, an expert mathematician who worked at University of Pittsburg America in early 1970's. It is a framework to make a decision effectively to complex problems to simplify and accelerate decision making process by solving problems into a smaller part, to arrange this part or variable in one hierarchy, to give numerical value to subjective consideration about the importance of each variable and synthesize this various consideration to determine which variable having the highest priority and acting to influence the result in that situation[13].

It is particularly useful method when the decision maker is unable to construct utility function [6]. In Fig. 1 shows the AHP Hierarchical structure 3 levels.

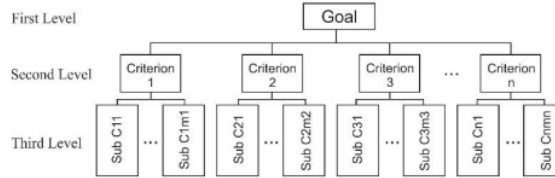


Fig. 1. Hierarchical structure of the AHP

Based on [12] in [9] there are 10 steps in Analytical Hierarchy Process (AHP) are as follows:

1. The first step we need determine the problem then set the solution and compile the problem encountered hierarchy;
2. Comparing each criterion in pairs to define the criteria weight. This process uses the Pair-wise Comparison Judgement Matrices (PCJM) method based on priority scheme, described in Table II:

TABLE II. RATIO SCALE IN THE AHP [14], [9].

Intensity of Interest	Linguistic	Information
1	Equal	Both elements are same important
3	Moderate	One element is not considerably more important than the other
5	Strong	One element is more important than the other
7	Demonstrated	One element is obviously more important than any other element
9	Extreme	One of the most extremely important elements of the other elements
2, 4, 6, 8	Intermediate Value	Values between two adjacent consideration values
Inverse	13	For activity "i" gets one number over activity "j", then "j" has its opposite value than "i"

3. Summing the value of each matched pair matrix column then dividing each value from the column with the sum of the corresponding columns. This step will perform normalization on a pairwise comparison matrix.

$$\bar{a}_{jk} = \frac{a_{jk}}{\sum_{l=1}^n a_{lk}} \quad (1)$$

4. Calculates the synthesis weight by sum every column in the similar row from the comparison normalization result of the matrix.

$$\sum \text{column} = k_1 + k_2 + k_3 + \dots + k_n \quad (2)$$

5. Calculates the eigenvalues by multiply each matched matrix columns in the similar row, then being lifted by an existing criterion number.

$$\lambda_1 = (k_1 \times k_2 \times k_3 \times \dots \times k_n)^{1/n} \quad (3)$$

6. Calculates each criterion priority weight by means of the eigenvalues for each criterion divided by the total number of eigenvalues.
7. Divide the synthesis weight by priority weight to calculate the importance of each criterion.
8. Divide the total number of importance values by the number of criteria to calculate the maximum eigenvalue ( $\mu_{max}$ ).
9. Measures the consistency of use to ensure that judgment for decision making is high consistency.

$$CI = \frac{(\mu_{max} - n)}{n - 1} \quad (4)$$

Where,

- $CI$  = Consistency Index
- $\mu_{max}$  = Maximum eigenvalue
- $n$  = Number of elements

10. Based on Saaty [15] suggested that CR value should not exceed 0.1 for a confident result. Calculate CR by divided consistency index and index random consistency.

$$CR = \frac{CI}{RI} \quad (5)$$

Where: IR

- $CR$  = Consistency Ratio
- $CI$  = Consistency Index
- $RI$  = Index Random Consistency

RI values can be seen in Table below

**TABLE III.** THE R.I FOR DIFFERENCE SIZE MATRICES [15]

Number of elements	R.I
3	0.52
4	0.89
5	1.11
6	1.25
7	1.35
8	1.40
9	1.45
10	1.49
11	1.51
12	1.54
13	1.56

Accuracy Testing is closeness measurement of measurement result to the true value/ reference value. In this research, this accuracy testing is conducted to see the capacity of this calculation in decision making. In the research of [9] accuracy calculation is done by calculating the number of accurate diagnosis divided by total data. This level of accuracy can be obtained by using the following calculation:

$$\text{accuracy} = \frac{\sum \text{true test data}}{\sum \text{test data}} \times 100\% \quad (6)$$

### III. MAIN RESULT

In this research, we did several steps shown in below. The first step we determine data sets which we collected from Department of Education and Culture in Manado City and the next step is based from the AHP steps below. Fig.2 shows the flow diagram of AHP work process.

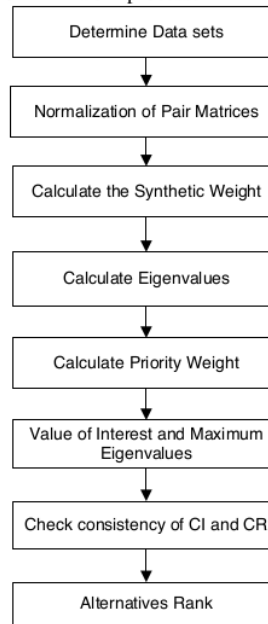


Fig. 2. Research Flow Chart

In the early step after teachers' assessment data were obtained, the researcher made comparison matrices by using Pair-wise Comparison Judgment Matrices Method (PCJM). The matrix of comparison result was done on each criterion, one of matrices for Pedagogic Criteria can be seen on Table IV as follows:

**TABLE IV.** PEDAGOGIC CRITERIA PAIR-WISE COMPARISON MATRICES

Pedagogic (Pe)	Pe1	Pe2	Pe3	Pe4	Pe5
PE1	1.00	3.00	3.00	5.00	2.00
PE2	0.33	1.00	3.00	3.00	0.33
PE3	0.33	0.33	1.00	3.00	0.33
PE4	0.20	0.33	0.33	1.00	0.25
PE5	0.50	3.00	3.00	4.00	1.00

The next step is to analyze criteria by conducting normalization to all pair-wise matrices in all criteria by using the formula on equation (1) above. Then priority vector calculation was done by using equation (2) and equation (3) for the result of normalization which was obtained from pair-wise matrices and priority vector for pedagogic criteria, can be seen on the following table:

**TABLE V.** NORMALIZATION AND PRIORITY VECTOR OF PEDAGOGIC CRITERIA

Normalization (Pe)	Pe1	Pe2	Pe3	Pe4	Pe5	SUM	Priority vector
PE1	0.42	0.39	0.29	0.31	0.51	1.93	0.39
PE2	0.14	0.13	0.29	0.19	0.09	0.83	0.17
PE3	0.14	0.04	0.10	0.19	0.09	0.55	0.11
PE4	0.08	0.04	0.03	0.06	0.06	0.29	0.06
PE5	0.21	0.39	0.29	0.25	0.26	1.40	0.28

Before doing the ranking, it is important to conduct consistency testing from the result of priority vector calculation, in which the value of *CR* from all calculation in each criterion must be evidenced. The true value is determined by the value of  $CR < 0,1$  [15].

Criteria	$\mu_{max}$	CI	RI	CR	Result
Pedagogic (Pe)	5.28569	.0714	1.11	0.0643	Consistent (CR<0.1)
Personality (K)	4.07159	0.0239	0.89	0.0268	Consistent (CR<0.1)
Social (S)	4.01454	0.0048	0.89	0.0054	Consistent (CR<0.1)
Professional (Pr)	3.00921	0.0046	0.52	0.0089	Consistent (CR<0.1)
Innovation development (Pi)	2.00000	0	0	0	Consistent (CR<0.1)
Utility of technology (Pt)	1.00000	0	0	0	Consistent (CR<0.1)

From the table above, there are 2 criteria in which the consistency testing is not necessary to be calculated because the *RI* value is nil with each of number of elements *n* is 2 and 1. In the last step, assessment of final weight on each criterion was done and continued with ranking by using the data of teachers' assessment result. Table A1 in Appendix shows the result using priority vector of each sub indicator. From the calculation above, the last result of assessment for 3 highest values are shown in the following Table A2 in Appendix.

The testing of accuracy level where in this case the level of conformity obtained by expert which will be searched with data calculated by using AHP method is as follows:

$$\text{accuracy} = \frac{26}{30} \times 100\% = 86.67\%$$

It is obtained that the accuracy level is 86.67 % resulted from true data test which is 26 and the number of data test is 30.

#### IV. CONCLUSION

This research determines and evaluate the teacher's quality in doing their duties and responsibilities as educators uses 6 criteria with 19 sub-criteria. The level of priority for each criterion shows that pedagogic criteria is an understanding to learners/students (Pe1) with priority vector of 0.39; personality criteria is to have a noble character (K4) with priority vector 0.482; professional criteria is to master broadly learning material (Pr1) with priority vector of 0.54;

innovative development criteria is the availability of scientific publication (Pi1) with priority vector of 0.75 and the last is the utility of information technology. From 30 teacher assessment alternatives by using AHP, the 3 highest final results are obtained namely:7.334, the second is 7.302 and the third is 7.277. The accuracy level using AHP in this case is 86.67%.

#### ACKNOWLEDGMENT

The authors express their sincere thanks and appreciations to Lembaga Penelitian dan Pengabdian kepada Masyarakat (LPPM) Universitas Negeri Manado for their valuable contributions and supports on this research.

#### REFERENCES

- [1] Sujianto, "Pengembangan Profesionalitas Berkelanjutan/Continuing Professional Development (CPD) Guru Bersertifikat Pendidik di SMK Rumpun Teknologi se-Malang Raya," *J. Pendidik. Sains*, vol. 1, no. 2, pp. 159–176, 2013.
- [2] A. Jaedun, "Pengembangan Keprofesionalan Guru Secara Berkelanjutan," [Online]. Available: <http://staffnew.uny.ac.id/upload/131569339/pengabdian/pengembangan-keprofesionalan-berkelanjutan.pdf>. [Accessed: 30-Aug-2018].
- [3] D.R. Bahari, E. Santoso, and S. Adinugroho, "Sistem Pendukung Keputusan Penentuan Guru Berprestasi Menggunakan Fuzzy-Analytic Hierarchy Process (F-AHP) (Studi Kasus : SMA Brawijaya Smart School)," *J. Pengemb. Teknol. Inf. dan Ilmu Komput.*, vol. 2, no. 5, pp. 205–210, 2018.
- [4] U. Yudatama and R. Sarno, "Evaluation Maturity Index and Risk Management for IT Governance Using Fuzzy AHP and Fuzzy Topsis," *Int. Semin. Intell. Anal. Its Appl.*, pp. 323–328, 2015.
- [5] M. Velasquez and P.T. Hester, "An Analysis of Multi-Criteria Decision Making Methods," *Int. J. Oper. Res.*, vol. 10, no. 2, pp. 56–66, 2013.
- [6] T. Ishizaka and P. Nemery, *Multi-Criteria Decision Analysis*, 2013.
- [7] A. Ozdagoglu and G. Ozdagoglu, "Comparison of Ahp and Fuzzy Ahp for the Multi- Criteria Decision Making Processes With Linguistic Evaluations," *Istanbul Ticaret Üniversitesi Fen Bilim. Derg.*, vol. 6, no. 1, pp. 65–85, 2007.
- [8] D.Y. Cengiz, "Applications of the extent analysis method on fuzzy AHP," *Eur. J. Oper. Res.*, vol. 95, no. 3, pp. 649–655, 1996.
- [9] A. Cahyapratama and R. Sarno, "Application of Analytic Hierarchy Process (AHP) and Simple Additive Weighting (SAW) methods in singer selection process," 2018 International Conference on Information and Communications Technology (ICOIACT) Yogyakarta, pp. 234–239, 2018.
- [10] R. Morgan, "An investigation of constraints upon fisheries diversification using the Analytic Hierarchy Process (AHP)," *Mar. Policy*, vol. 86, pp. 24–30, 2017.
- [11] M. Celik, I. Deha, and A. F. Ozok, "Application of fuzzy extended AHP methodology on shipping registry selection: The case of Turkish maritime industry," *Expert Syst. Appl.*, vol. 36, no. 1, pp. 190–198, 2009.
- [12] Q. Xu and M. Xiong, "A Practical Method for Improving Consistency of Judgement Matrix in the Ahp," *J. Syst. Sci. Complex.*, vol. 17, no. 2, pp. 169–175, 2004.
- [13] A. Susanti, "Sistem Pendukung Keputusan Pemilihan Guru Berprestasi Menggunakan Metode Analytical Hierarchy Process Pada Smk Negeri 9 Semarang," unpublished.
- [14] Morgan R, "An investigation of constraints upon fisheries diversification using the Analytic Hierarchy Process (AHP)," *Mar. Policy*, vol. 86, pp. 24–30, May 2017.
- [15] T. Gwo-Hshiung and H. Jih-Jeng, *Multiple Attribute Decision Making: Method and Application*. Boca Raton, Florida: CRC Press, 2011.



**TABLE A1. NUMBER OF WEIGHT OF EACH ASSESSMENT AND RANKING**

Name	Criteria Priority Vector	Pedagogic (Pe)					Personality (K)				Social (S)				Professional (Pr)			Innovation (Pi)		Utility of Tech		Number of values	Number of weights	Final Result	Rank									
		Pe1	Pe2	Pe3	Pe4	Pe5	weight of PE	K1	K2	K3	K4	weight of K	S1	S2	S3	S4	Weight of S	Pr1	Pr2	Pr3	Weight of Pr					Pi1	Pi2	Pi3	weight of Pi	Pt	weight of Pt			
Teacher 1		7.0	8.0	5.0	8.0	7.0	7.003	6.0	8.0	6.0	6.0	6.341	9.0	9.0	8.0	8.0	8.754	7.0	8.0	8.0	7.461	7.0	6.0	6.250	8.0	8.0	8.0	6.250	8.0	8.0	139	43.81	7.302	2
Teacher 2		8.0	9.0	7.0	8.0	8.0	8.056	8.0	8.0	8.0	6.0	6.760	7.0	6.0	6.0	8.0	6.659	4.0	5.0	5.0	7.461	4.0	4.0	4.000	7.0	7.0	7.0	4.000	7.0	7.0	124	36.94	6.156	20
Teacher 3		9.0	9.0	9.0	7.0	9.0	8.885	5.0	8.0	5.0	5.0	5.512	8.0	7.0	6.0	7.0	7.325	7.0	8.0	8.0	7.461	5.0	6.0	5.750	8.0	8.0	8.0	5.750	8.0	8.0	136	42.93	7.156	5
Teacher 4		8.0	8.0	6.0	8.0	7.0	7.449	7.0	8.0	7.0	6.0	6.721	7.0	6.0	5.0	8.0	6.501	8.0	7.0	8.0	7.703	4.0	3.0	3.250	4.0	4.0	4.0	3.250	4.0	4.0	125	35.67	5.946	21
Teacher 5		7.0	7.0	7.0	8.0	7.0	7.057	8.0	6.0	8.0	7.0	7.029	8.0	8.0	6.0	6.0	7.508	7.0	8.0	8.0	7.461	7.0	6.0	6.250	6.0	6.0	6.0	6.250	6.0	6.0	135	41.49	6.914	9
Teacher 6		5.0	5.0	5.0	8.0	5.0	5.172	7.0	8.0	7.0	8.0	7.620	8.0	8.0	9.0	7.0	8.069	8.0	8.0	8.0	8.000	8.0	8.0	8.000	8.0	8.0	8.0	8.000	5.0	5.0	135	41.86	6.977	8
Teacher 7		8.0	9.0	8.0	8.0	8.0	8.167	8.0	8.0	8.0	6.0	7.101	8.0	7.0	8.0	5.0	7.463	6.0	6.0	5.0	5.836	6.0	6.0	6.000	8.0	8.0	8.0	6.000	8.0	8.0	136	42.57	7.095	7
Teacher 8		7.0	8.0	8.0	8.0	4.0	6.496	6.0	6.0	8.0	9.0	7.589	5.0	4.0	5.0	5.0	4.728	5.0	6.0	5.0	5.297	7.0	6.0	6.250	9.0	9.0	9.0	6.250	9.0	9.0	121	39.36	6.560	15
Teacher 9		8.0	8.0	5.0	8.0	8.0	7.668	8.0	9.0	8.0	7.0	7.721	8.0	8.0	6.0	7.0	7.597	8.0	8.0	8.0	8.000	8.0	9.0	8.750	3.0	3.0	3.0	8.750	3.0	3.0	142	42.74	7.123	6
Teacher 10		7.0	8.0	7.0	8.0	4.0	6.385	7.0	6.0	9.0	9.0	7.969	7.0	6.0	5.0	5.0	6.237	7.0	6.0	8.0	6.867	3.0	4.0	3.750	8.0	8.0	8.0	3.750	8.0	8.0	124	39.21	6.535	17

TABLE 11. THE 3 HIGHEST RANK FROM TEACHERS' ASSESSMENT RESULT

Name	Criteria Priority Vector	Pedagogic (Pe)					Personality (K)					Social (S)					Professional (Pr)			Innovation (Pi)		Utility of Tech		Number of values	Number of weights	Final Result	Rank					
		Pe1	Pe2	Pe3	Pe4	Pe5	K1	K2	K3	K4	weight of K	S1	S2	S3	S4	Weight of S	Pr1	Pr2	Pr3	Weight of Pr	PI1	PI2	weight of Pi					Pt	weight of Pt			
Teacher 1		0.39	0.17	0.11	0.06	0.28	0.2596	0.17	0.1202	0.4495	0.482	0.272	0.158	0.088	8.754	7.0	8.0	8.0	8.0	7.46104	0.25	0.75	6.0	6.0	6.0	8.0	8.0	8.0	139	43.8093	7.302	2
Teacher 20		7.0	8.0	7.0	4.0	7.0	8.0	7.0	9.0	5.0	6.0	7.0	7.0	8.0	6.606	7.0	8.0	8.0	8.0	7.46104	8.0	8.0	8.0	8.0	8.0	8.0	8.0	139	43.6628	7.277	3	
Teacher 22		7.0	8.0	7.0	7.0	8.0	7.0	5.0	7.0	6.0	8.0	8.0	6.0	7.0	7.597	7.0	7.0	7.0	7	7.0	7.0	8.0	8.0	8.0	8.0	8.0	139	44.0023	7.334	1		

# Analytic Hierarchy Process (AHP) Methods For Evaluation of Teacher Quality

---

## ORIGINALITY REPORT

---

17%

SIMILARITY INDEX

14%

INTERNET SOURCES

12%

PUBLICATIONS

9%

STUDENT PAPERS

---

## PRIMARY SOURCES

---

1 Submitted to Universitas Negeri Surabaya The State University of Surabaya 1%  
Student Paper

---

2 etasr.com 1%  
Internet Source

---

3 aast.edu 1%  
Internet Source

---

4 journal-isi.org 1%  
Internet Source

---

5 ijeecs.iaescore.com 1%  
Internet Source

---

6 cyberleninka.org 1%  
Internet Source

---

7 Submitted to University College London 1%  
Student Paper

---

8 www.jatit.org 1%  
Internet Source

---

[jurnal.uns.ac.id](http://jurnal.uns.ac.id)



9	Internet Source	1 %
10	<a href="http://erecursos.uacj.mx">erecursos.uacj.mx</a> Internet Source	1 %
11	Irene R.H.T. Tangkawarow, Riyanarto Sarno, Abd. Charis Fauzan. "Evaluation the Performance of Tax Determination Using Discrete Event Simulation", 2018 2nd International Conference on Informatics and Computational Sciences (ICICoS), 2018 Publication	1 %
12	<a href="http://repository.ub.ac.id">repository.ub.ac.id</a> Internet Source	1 %
13	Chaymae Benfares, Ouidad Akhrif, Younès El Bouzekri El Idrissi, Karim Hamid. "Multi-Criteria Decision Making Semantic for Mental Healthcare", International Journal of Smart Security Technologies, 2020 Publication	1 %
14	Dian Rachmawati, Sri Handayani, Lisa Rokhmani. "Competence of Economic Teachers in the Industrial Revolution Era 4.0: Case Study at State High Schools in Malang City, Indonesia", KnE Social Sciences, 2020 Publication	<1 %
15	<a href="http://academic.dinus.ac.id">academic.dinus.ac.id</a> Internet Source	<1 %

16	<a href="http://hipkinjateng.org">hipkinjateng.org</a> Internet Source	<1 %
17	<a href="http://jeecs.ubhara.ac.id">jeecs.ubhara.ac.id</a> Internet Source	<1 %
18	<a href="http://www.maticasrpska.org.rs">www.maticasrpska.org.rs</a> Internet Source	<1 %
19	Submitted to Universitas Mercu Buana Student Paper	<1 %
20	<a href="http://bibliotekanauki.pl">bibliotekanauki.pl</a> Internet Source	<1 %
21	<a href="http://scindeks-clanci.ceon.rs">scindeks-clanci.ceon.rs</a> Internet Source	<1 %
22	<a href="http://www.ijerd.com">www.ijerd.com</a> Internet Source	<1 %
23	<a href="http://www.dovepress.com">www.dovepress.com</a> Internet Source	<1 %
24	<a href="http://garuda.kemdikbud.go.id">garuda.kemdikbud.go.id</a> Internet Source	<1 %
25	Celik, M.. "Fuzzy axiomatic design extension for managing model selection paradigm in decision science", Expert Systems With Applications, 200904 Publication	<1 %
26	<a href="http://icsot.ppns.ac.id">icsot.ppns.ac.id</a> Internet Source	<1 %

27	<a href="http://karya-ilmiah.um.ac.id">karya-ilmiah.um.ac.id</a> Internet Source	<1 %
28	<a href="http://ejurnal.undana.ac.id">ejurnal.undana.ac.id</a> Internet Source	<1 %
29	<a href="http://repository.lppm.unila.ac.id">repository.lppm.unila.ac.id</a> Internet Source	<1 %
30	<a href="http://repository.unima.ac.id">repository.unima.ac.id</a> Internet Source	<1 %
31	<a href="http://res.mdpi.com">res.mdpi.com</a> Internet Source	<1 %
32	M Hamka, Harjono. "Application of fuzzy preference relations method in AHP to improve judgment matrix consistency", IOP Conference Series: Materials Science and Engineering, 2020 Publication	<1 %

Exclude quotes Off

Exclude matches < 2 words

Exclude bibliography Off